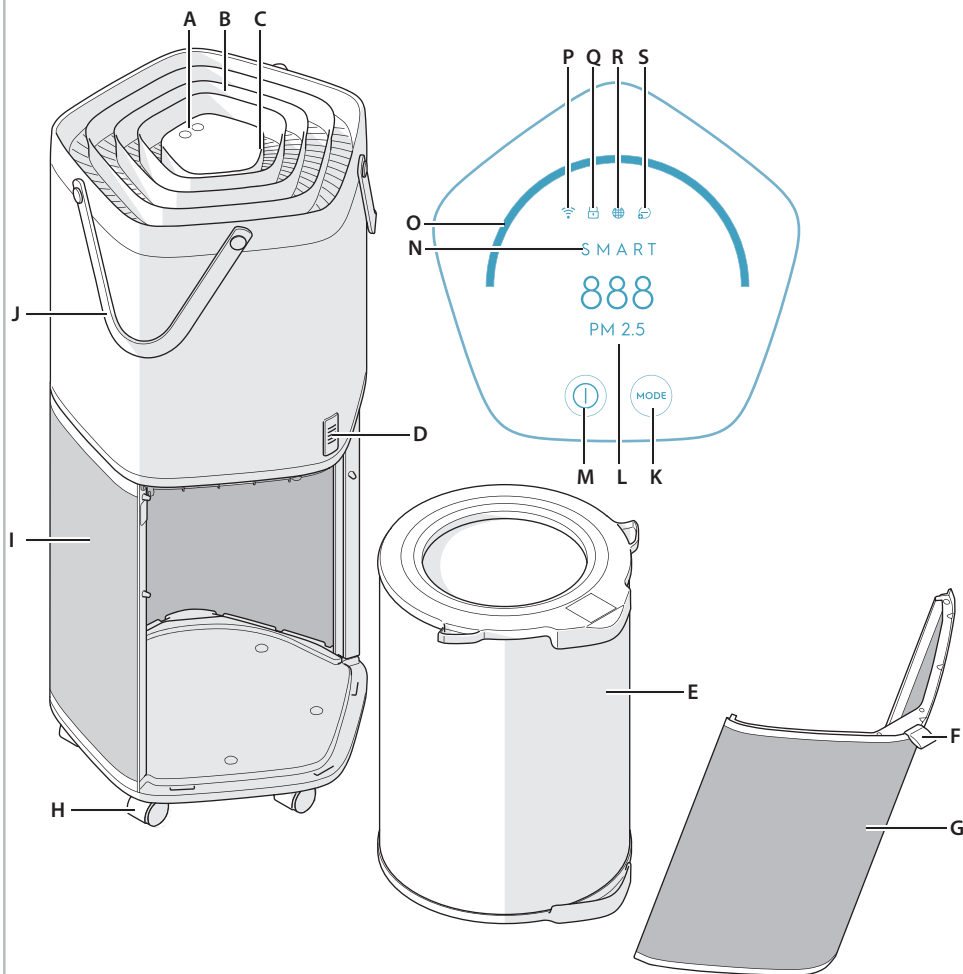




Instruction Book

PURE A9





GB DESCRIPCIÓN DE SU PURIFICADOR DE AIRE Pure A9

Appliance:

- A. Control panel
- B. Air outlet
- C. Air quality light
- D. Air quality sensor
- E. HEPA Filter
- F. Fabric handle
- G. Air Intake door
- H. Wheels
- I. Air intake
- J. Product handles

Control panel:

- K. Mode button
- L. Display screen
- M. On/Off button
- N. Mode indicator
- O. Fan speed slider

- P. WiFi indicator
- Q. Child lock indicator
- R. Filter change indicator
- S. Ionizer indicator

Features might be added or updated with new app releases.

Note: For reference only. Actual product components might vary slightly based on model purchased.

ES DESCRIPCIÓN DE SU PURIFICADOR DE AIRE Pure A9

Aparato:

- A. Panel de control
- B. Salida de aire
- C. Luz de calidad del aire
- D. Sensor de calidad del aire
- E. Filtro HEPA
- F. Mango de tela
- G. Puerta de entrada de aire
- H. Ruedas
- I. Toma de aire
- J. Asas de producto

Panel de control:

- K. Botón de modo
- L. Pantalla de visualización
- M. Botón de encendido/apagado
- N. Indicador de modo
- O. Control deslizante de velocidad del ventilador
- P. Indicador WiFi
- Q. Indicador de bloqueo para niños
- R. Indicador de cambio de filtro
- S. Indicador de ionizador

Funktioner kan läggas till och justeras vid uppdateringar av appen.

Nota: Para referencia solamente. Los componentes del producto actuales pueden variar ligeramente según el modelo comprado.

FR DESCRIPTION DE VOTRE PURIFICATEUR D'AIR Pure A9

Appareil :

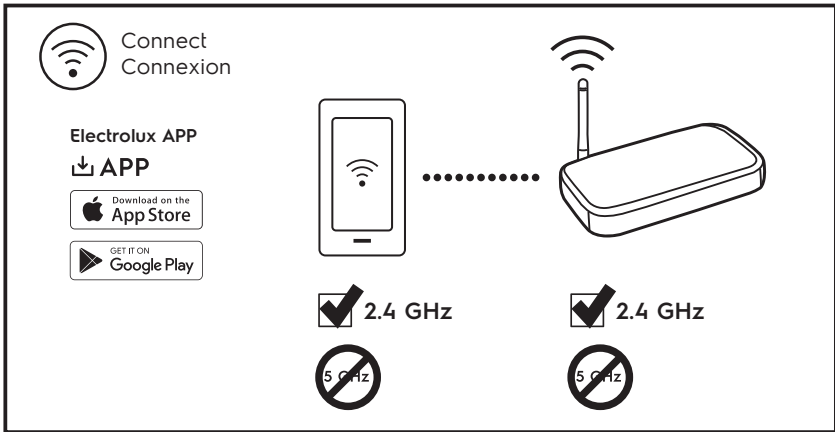
- A. Bandeau de commande
- B. Sortie d'air
- C. Témoin de qualité de l'air
- D. Capteur de qualité de l'air
- E. Filtre HEPA
- F. Poignée en tissu
- G. Volet d'entrée d'air
- H. Roues
- I. Entrée d'air
- J. Poignées du produit

Bandeau de commande :

- K. Touche de mode
- L. Écran
- M. Touche Marche/Arrêt
- N. Voyant de mode
- O. Curseur de vitesse du ventilateur
- P. Voyant WiFi
- Q. Voyant de verrouillage Enfants
- R. Voyant de changement du filtre
- S. Voyant ioniseur

Des caractéristiques peuvent être ajoutées ou mises à jour par le biais de nouvelles sorties d'appli.

Remarque : À titre indicatif uniquement. Les composants réels du produit peuvent varier légèrement en fonction du modèle acheté.



To connect your air purifier: Download and install the Electrolux APP from Apple Store or Google Play. Follow instructions in the app to connect your Electrolux Air Purifier.

The software in the air purifier is partly based on free and open source software. To see the full copyright information and applicable license terms, please visit: <https://emtech.delta.electrolux.com/license>

Para conectar su purificador de aire: Descargue e instale la aplicación Electrolux desde la Apple Store o Google Play.

Siga las instrucciones en la aplicación para conectar su Purificador de aire Electrolux.

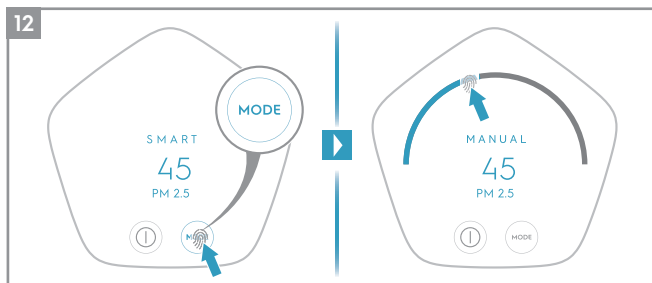
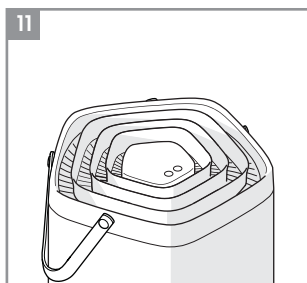
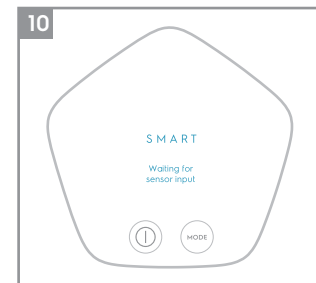
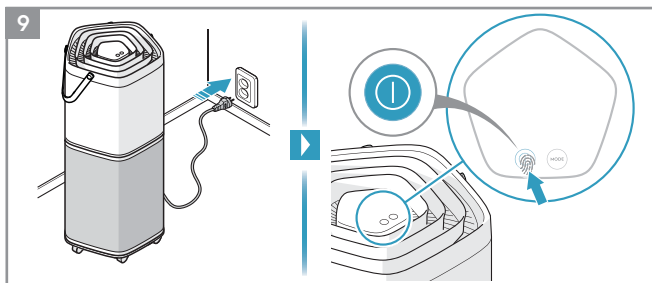
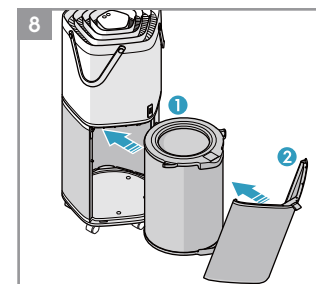
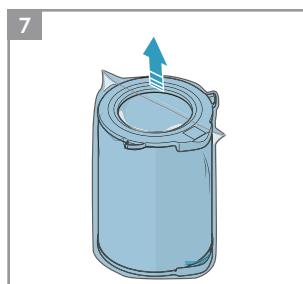
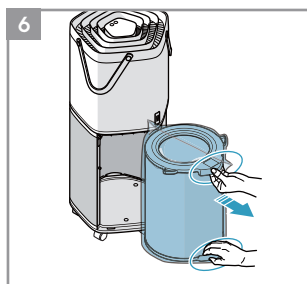
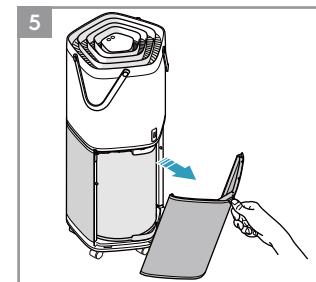
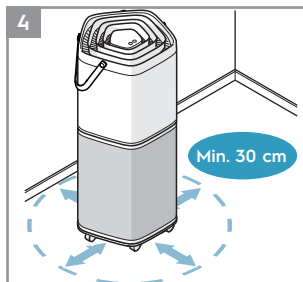
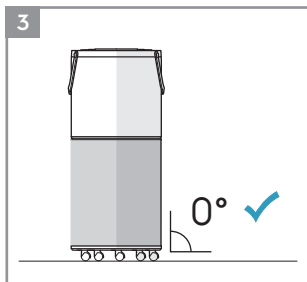
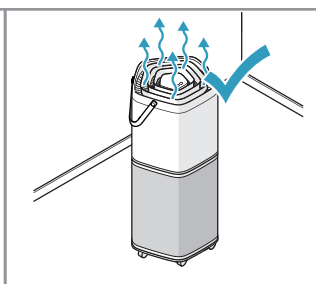
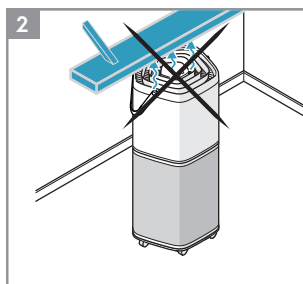
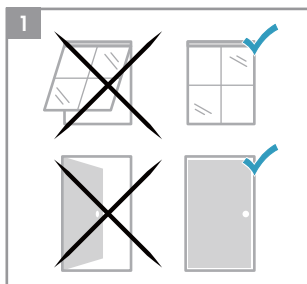
El software en el purificador de aire se basa parcialmente en un software gratuito de fuente abierta. Para ver la información de derechos de autor completa y los términos de licencia aplicables, visite:

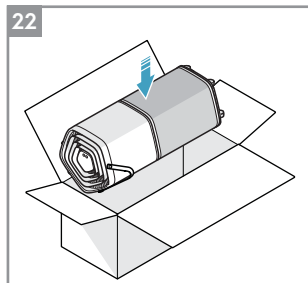
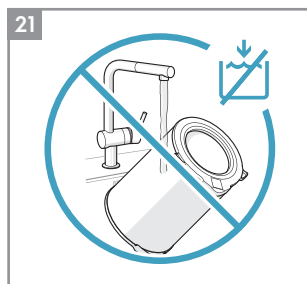
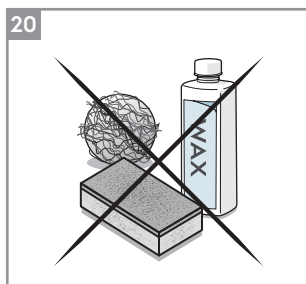
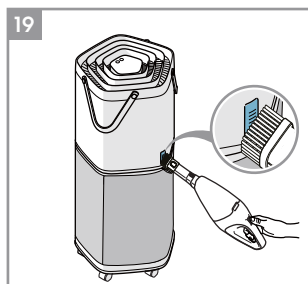
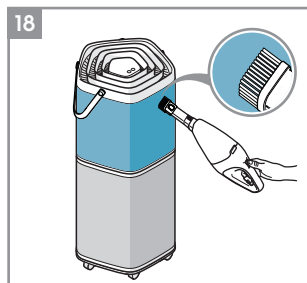
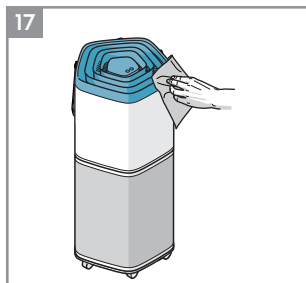
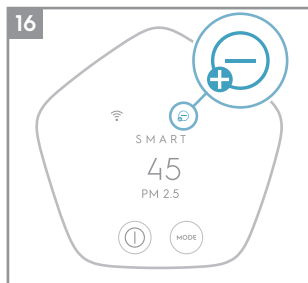
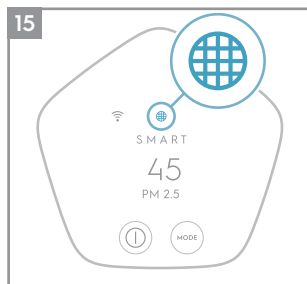
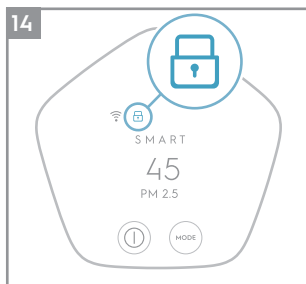
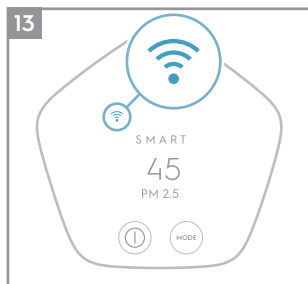
<https://emtech.delta.electrolux.com/license>

Pour connecter votre purificateur d'air : Téléchargez et installez l'APPLI Electrolux depuis Apple Store ou Google Play.

Suivez les instructions de l'appli pour connecter votre purificateur d'air Electrolux.

Le logiciel du purificateur d'air est en partie basé sur un logiciel open source gratuit. Pour voir les informations complètes sur les droits d'auteur et les conditions de licence applicables, rendez-vous sur : <https://emtech.delta.electrolux.com/license>





SAFETY INFORMATION

This USER MANUAL provides specific operating instructions for your model. Use the unit only as instructed in this USER MANUAL. These instructions are not meant to cover every possible condition and situation that may occur. Common sense and caution must be practiced when installing, operating, and maintaining any appliance.

WARNING!

Do not store or use gasoline or other flammable vapors and liquids in the vicinity of this or any other appliance. Read product labels for flammability and other warnings.

Do not let water or any other liquid or flammable detergent enter the appliance to avoid electric shock and/or a fire hazard.

Do not touch the fan blade when removing the filter.

Children and Vulnerable People Safety

WARNING! Risk of suffocation, injury or permanent disability.

This appliance can be used by children aged from 8 years and above and persons with reduced physical, sensory or mental capabilities or lack of experience and knowledge if they have been given supervision or instruction concerning use of the appliance in a safe way and understand the hazards involved.

Children shall not play with the appliance.

Cleaning and user maintenance shall not be made by children without supervision.

Children under 3 years of age should be kept away from the appliance unless continuously supervised.

Keep all packaging away from children.

Safety Precautions

1. **CAUTION!** This equipment should be inspected frequently and collected dirt removed from it regularly to prevent excessive accumulation that may result in flashover or a risk of fire.
2. **WARNING! RISK OF ELECTRIC SHOCK** – These servicing instructions are for use by qualified personnel only. To reduce the risk of electric shock, do not perform any servicing other than that contained in the operating instructions unless you are qualified to do so.
3. To reduce the risk of electric shock, this equipment has a polarized plug (one blade is wider than the other). This plug will fit in a polarized outlet only one way. If the plug does not fit fully in the outlet, reverse the plug. If it still does not fit, contact qualified personnel to install the proper outlet. Do not alter the plug in any way.
4. This product complies with the maximum allowable concentration of ozone of 0.050 parts per million by volume (ppmv) in a 24-hour period. The Health Canada Guideline 2010 recommends that the maximum exposure limit, based on an averaging time of 8 hours, is 0.020 ppmv or less when tested in a sealed, controlled room approximately 30 m³.
5. This device complies with Part 15 of the FCC Rules / Industry Canada licence-exempt RSS standard(s). Operation is subject to the following two conditions: (1) this device may not cause harmful interference, and (2) this device must accept any interference received, including interference that may cause undesired operation.
6. Changes or modifications not expressly approved by the party responsible for compliance could void the user's authority to operate the equipment.
7. This equipment has been tested and found to comply with the limits for a Class B digital device, pursuant to part 15 of the FCC Rules. These limits are designed to provide reasonable protection against harmful interference in a residential installation. This equipment generates uses and can radiate radio frequency energy and, if not installed and used in accordance with the instructions, may cause harmful interference to radio communications. However, there is no guarantee that interference will not occur in a particular installation. If this equipment does cause harmful interference to radio or television reception, which can be determined by turning the equipment off and on, the user is encouraged to try to correct the interference by one or more of the following measures:
 - Reorient or relocate the receiving antenna.

- Increase the separation between the equipment and receiver.
- Connect the equipment into an outlet on a circuit different from that to which the receiver is connected.
- Consult the dealer or an experienced radio/TV technician for help.

8. To satisfy FCC / IC RF exposure requirements, a separation distance of 20 cm or more should be maintained between the antenna of this device and persons during device operation. To ensure compliance, operations at closer than this distance is not recommended.

ENGLISH

Thank you for choosing the Electrolux air purifier Pure A9.

Always use original accessories and spare parts to get the best results. This product is designed with the environment in mind. All plastic parts are marked for recycling purposes.

BEFORE STARTING

- Read this manual carefully.
- Check that all parts described are included.
- Pay special attention to the safety precautions!

Picture pages 4-5

BEFORE FIRST USE

Place the product according to the instructions below for optimal operation and results:

- 1 Operate the air cleaner in an enclosed area. Close all doors, windows, and other openings connecting to the outside of the room.
- 2 Place the air cleaner in a location that does not restrict the airflow through the top of the appliance.
- 3 The appliance must be placed on a leveled floor that can support it.
- 4 There should be a minimum of 30 cm of clearance around the appliance.

Remove the plastic protective bag from the HEPA Filter:

- 5 Pull the Fabric handle outward to remove the air intake door.
- 6 Take out the HEPA Filter pulling it out by the handle.
- 7 Remove the plastic protective bag from the HEPA Filter
- 8 Reinstall the HEPA Filter into the appliance.

OPERATION INSTRUCTIONS

TO TURN ON THE APPLIANCE

- 9 Plug in the appliance and tap (touch and release) the "ⓘ" button to turn it on.

NOTE: It will take about 10 seconds for the sensor to analyze the air quality, during this time the Loading LED and the Air quality light will pulsate slowly in white. Each time the appliance is turned on the SMART mode is activated automatically and the fan runs in low speed until the air quality analysis is complete.

SMART MODE

- 10 In this mode, the appliance will choose the fan speed automatically, based on the air quality level. This is the default mode each time the appliance is turned on.

NOTE: In "SMART" mode the fan speed cannot be changed manually.

About the Air quality light

- 11 The appliance has an air quality sensor that analyzes the air quality.

The air quality light will show the real-time air quality through different colors of light. As shown below:

LIGHT'S COLOR	PM 2.5 (µg/m³)	AIR QUALITY
Green	0-12	Good
Yellow	13-35	Moderate
Orange	36-55	Unhealthy for Sensitive Groups
Red	56-150	Unhealthy
Purple	151-250	Very Unhealthy
Maroon	>250	Hazardous

NOTE: It will take about 10 seconds for the sensor to analyze the air quality each time the appliance is turned on. During this time, the air quality light will pulsate slowly in white.

Very high humidity conditions in the room might produce condensation in the sensors. This could affect the accuracy of the sensor readings.

MANUAL MODE

- 12 Tap the "MODE" button to switch the appliance to "MANUAL" mode. In this mode, the fan speed can be changed manually by touching the Fan speed slider.

NOTE: The fan speed will change gradually after a new fan speed is selected.

WIFI FUNCTION

- 13 This appliance is equipped with a WiFi module, which you can access to the full functionality of the system via our smartphone app. Download our app and follow the instructions for how to connect it with your appliance. When the connection is established, the WiFi indicator will light up.

CHILD LOCK FUNCTION

- 14 The Child lock can be activated and deactivated by long pressing the On/Off and the Mode button simultaneously for 4 seconds. This function can also be activated or deactivated via the app. When the Child lock is activated, the control panel of the appliance cannot be interacted with and the Child lock indicator light up.

FILTER CHANGE INDICATOR

- 15 The filter change indicator will light up to remind you to change the filter after 9000hrs usage (maybe will remind you to change filter early depending on the actual usage environment). Refer to the instructions in the app or the Electrolux website on where to purchase replacement filters. Ensure the plastic protective bag is removed from the replacement filter before use. After the filter is replaced, the filter change indicator will turn off automatically.

NOTE: The HEPA Filter cannot be washed, it can only be replaced.

For EHAW4010AG, replace filter with SKU# ELPARAC3, PureAdvantage RAC-3 HEPA Filter™.

For EHAW6020AG, replace filter with SKU# ELPARAC4, PureAdvantage RAC-4 HEPA Filter™.

IONIZER FUNCTION

- 16 The ionizer function can only be activated and deactivated by using the app (smartphone application). When this function is activated, the ionizer indicator lights up and the appliance generates ions to improve the unit's performance and with it the room's air quality.

SCHEDULE FUNCTION

In the app (smart phone application) you can set different schedules, for example that the fan speed goes down during night time and then goes back to normal speed during day time.

CARE AND CLEANING

Unplug the appliance before cleaning to prevent shock or fire hazards.

- 17 The plastic parts of the appliance may be cleaned with an oil-free dry cloth or by using a vacuum cleaner with a soft brush.
- 18 The fabric on the appliance cannot be removed. Clean the fabric by using an oil-free dry cloth or a vacuum cleaner with a soft brush.
- 19 Dust accumulated in the Air quality sensor can result in incorrect sensor readings and affect performance. Use a vacuum cleaner with a soft brush to remove any dust that might accumulate in this area. Vacuum at least monthly.
- 20 Never use abrasive, harsh cleaners or wax when cleaning the unit.
- 21 **NOTE:** The HEPA Filter cannot be washed, it can only be replaced.
For EHAW4010AG, replace filter with SKU# ELPARAC3, PureAdvantage RAC-3 HEPA Filter™ .
For EHAW6020AG, replace filter with SKU# ELPARAC4, PureAdvantage RAC-4 HEPA Filter™ .




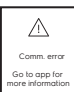


Storage

- 22 If you are not planning to use the appliance for a long time, cover it with plastic or return it to its carton.

Enjoy a great cleaning experience with your Electrolux air purifier Pure A9!

Electrolux reserves the right to change products, information and specifications without notice.

TROUBLESHOOTING

PROBLEM	SOLUTION
The air purifier does not operate.	<ul style="list-style-type: none"> • Check if the power plug is disconnected. Push the power plug firmly into the electrical outlet. • Check if the house fuse is blown or the circuit breaker tripped. Replace the fuse with a time delay type or reset the circuit breaker.
The air quality does not improve.	<ul style="list-style-type: none"> • Check if the windows or doors are opened. Close all doors, windows and other openings connecting to the outside of the room.
The fan does not operate.	<ul style="list-style-type: none"> • Ensure that the air intake door (image 8) is closed properly, and the filter is installed correctly, then retry using the purifier.
The fan speed does not change after selecting a new fan speed.	<ul style="list-style-type: none"> • The fan speed will decrease or increase gradually, this is normal. If it does not change after a prolonged period of time after the input then please reach out to an Electrolux authorized servicer for support.
The appliance is very loud.	<ul style="list-style-type: none"> • Ensure that there are no obstacles near the appliance and that it has a minimum of 30 cm of clearance around it for optimal operation.
The appliance produces a strange smell.	<ul style="list-style-type: none"> • The first time you use the purifier, you might perceive a plastic or paint smell. This is normal, but it should disappear quickly. If the smell persists or if you sense a burning smell, please disconnect the purifier and reach out to an Electrolux authorized servicer for support.
The app does not operate properly or it is not possible to onboard the appliance on the app.	<ul style="list-style-type: none"> • Please reach out to an Electrolux authorized servicer for support on the topic.
The screen shows the error message "PM sensor failure". 	<ul style="list-style-type: none"> • PM sensor is not working correctly. Please reach out to Electrolux authorized servicer for further diagnosis and repair or replacement.
The screen shows the error message "TVOC sensor error". 	<ul style="list-style-type: none"> • TVOC sensor is not working correctly. Please reach out to Electrolux authorized servicer for further diagnosis and repair or replacement. You can continue to use the product in the short term for the purpose of purification.
The screen shows the error message "Fan motor stall". 	<ul style="list-style-type: none"> • Please immediately unplug the unit and carefully check if the fan or air discharge is being obstructed. If nothing is blocking the fan or air discharge and the air intake door (image 8) is properly closed, please reach out to an Electrolux authorized servicer for further diagnosis and repair or replacement. Refrain from turning on the product until the issue is resolved.
The screen shows the error message "Comm. error". 	<ul style="list-style-type: none"> • This represents a communication error. Please go to the app for further diagnosis or reach out to an Electrolux authorized servicer for support on this error.
The screen shows the error message "Filter door open". 	<ul style="list-style-type: none"> • Please open the back air intake cover (image 8) and close it again. Ensure it is closed properly. If this does not resolve the error, please reach out to an Electrolux authorized servicer for support.
The screen shows the error message "RFID invalid". 	<ul style="list-style-type: none"> • Please go to the app to check if the filter needs to be replaced, and if so please order a replacement filter for the unit. If the filter does not need to be replaced (or was replaced recently) and the error persists please reach out to an Electrolux authorized server for support.
For any further problems, contact an authorized Electrolux service centre.	

Limited Warranty

Your appliance is covered by a two year limited warranty. For two years from your original date of purchase, Electrolux will pay all costs for repairing or replacing any parts of this appliance that prove to be defective in materials or workmanship when such appliance is installed, used and maintained in accordance with the provided instructions.

Exclusions

This warranty does not cover the following:

1. Products with original serial numbers that have been removed, altered or cannot be readily determined.
2. Product that has been transferred from its original owner to another party or removed outside the USA or Canada.
3. Rust on the interior or exterior of the unit.
4. Products purchased "as-is" are not covered by this warranty.
5. Products used in a commercial setting.
6. Service calls which do not involve malfunction or defects in materials or workmanship, or for appliances not in ordinary household use or used other than in accordance with the provided instructions.
7. Service calls to correct the installation of your appliance or to instruct you how to use your appliance.
8. Expenses for making the appliance accessible for servicing, such as removal of trim, cupboards, shelves, etc., which are not a part of the appliance when it is shipped from the factory.
9. Service calls to repair or replace appliance light bulbs, air filters, other consumables, or knobs, handles, or other cosmetic parts.
10. Pickup and delivery costs; your appliance is designed to be repaired in the home.
11. Surcharges including, but not limited to, any after hour, weekend, or holiday service calls, tolls, ferry trip charges, or mileage expense for service calls to remote areas, including the state of Alaska.
12. Damages to the finish of appliance or home incurred during transportation or installation, including but not limited to floors, cabinets, walls, etc.
13. Damages caused by: services performed by unauthorized service companies; use of parts other than genuine Electrolux parts or parts obtained from persons other than authorized service companies; or external causes such as abuse, misuse, inadequate power supply, accidents, fires, or acts of God.

DISCLAIMER OF IMPLIED WARRANTIES; LIMITATION OF REMEDIES

CUSTOMER'S SOLE AND EXCLUSIVE REMEDY UNDER THIS LIMITED WARRANTY SHALL BE REPAIR OR REPLACEMENT AS PROVIDED HEREIN. CLAIMS BASED ON IMPLIED WARRANTIES, INCLUDING WARRANTIES OF MERCHANTABILITY OR FITNESS FOR A PARTICULAR PURPOSE, ARE LIMITED TO ONE YEAR OR THE SHORTEST PERIOD ALLOWED BY LAW, BUT NOT LESS THAN ONE YEAR. ELECTROLUX SHALL NOT BE LIABLE FOR CONSEQUENTIAL OR INCIDENTAL DAMAGES SUCH AS PROPERTY DAMAGE AND INCIDENTAL EXPENSES RESULTING FROM ANY BREACH OF THIS WRITTEN LIMITED WARRANTY OR ANY IMPLIED WARRANTY. SOME STATES AND PROVINCES DO NOT ALLOW THE EXCLUSION OR LIMITATION OF INCIDENTAL OR CONSEQUENTIAL DAMAGES, OR LIMITATIONS ON THE DURATION OF IMPLIED WARRANTIES, SO THESE LIMITATIONS OR EXCLUSIONS MAY NOT APPLY TO YOU. THIS WRITTEN WARRANTY GIVES YOU SPECIFIC LEGAL RIGHTS. YOU MAY ALSO HAVE OTHER RIGHTS THAT VARY FROM STATE TO STATE.

If You Need Service

Keep your receipt, delivery slip, or some other appropriate payment record to establish the warranty period should service be required. If service is performed, it is in your best interest to obtain and keep all receipts. Service under this warranty must be obtained by contacting Electrolux at the addresses or phone numbers below.

This warranty only applies in the USA, Puerto Rico and Canada. In the USA and Puerto Rico, your appliance is warranted by Electrolux Major Appliances North America, a division of Electrolux Home Products, Inc. In Canada, your appliance is warranted by Electrolux Canada Corp. Electrolux authorizes no person to change or add to any obligations under this warranty. Obligations for service and parts under this warranty must be performed by Electrolux or an authorized service company. Product features or specifications as described or illustrated are subject to change without notice.

USA
1-800 896 9756
Electrolux Appliances North America
10200 David Taylor Drive
Charlotte, NC 28262



Canada
1-800 896 9756
Electrolux Canada Corp.
5855 Terry Fox Way
Mississauga, Ontario,
Canada L5V 3E4