

Use & Care Manual

Vacuum Pump



Electrolux



ElectroluxAppliances.com
ElectroluxAppliances.ca

THANK YOU FOR CHOOSING OUR APPLIANCE!

For Customer Care support and webshop, or to download an extended version of this manual, visit:
ElectroluxAppliances.com

Welcome to Electrolux!	2	Care & Cleaning	5
Important Safety Instructions.	3	Warranty	7
Operation	4		

This manual is your resource for the use and care of your product. Please read it before using your appliance. Keep it handy for quick reference. If something doesn't seem right, the troubleshooting section will help you with common issues.

Visit Owner Support on ElectroluxAppliances.com for access to FAQs, how-to videos and articles, accessories and cleaning products.

We are here for you! Visit our website, chat with an agent, or call us if you need help. If you do need service, we can get that started for you.

For Peace of Mind Protection, register your product. Locate your registration card and/or label on your product with the photo register icon.

Keep your product info here so it's easy to find.

Model Number: _____

Serial Number: _____

Purchase Date: _____

Conforms to UL Std. 1026

Cert. to CSA Std. C22.2 No. 1335.1 (1993)&No. 1335.9(1993)

For Household Use Only. Do not immerse in water



SAFETY PRECAUTIONS

The vacuum pump (hereinafter referred to as the "appliance") is intended to be exclusively used with all ELECTROLUX vacuum storage solutions to create an effective vacuum seal for long-lasting food storage. It may only be used with the accessories supplied or approved by us. Any other use is considered improper and may result in personal injury or property damage. The appliance is intended for domestic use. It is not intended for commercial use. Do not use the appliance on yourself, other persons or animals.

This appliance can be used by children aged from 8 years and above and persons with reduced physical, sensory or mental capabilities or lack of experience and knowledge if they have been given supervision or instruction concerning use of the appliance in a safe way and understand the hazards involved.

Children shall not play with this appliance.

Cleaning and maintenance shall not be made by children without supervision.

Batteries must be removed from the appliance before it is scrapped. The battery is to be disposed of safely in accordance with local laws.

Only use the charging adapter that was provided with the product.

Packaging material, e.g. plastic bags should not be accessible to children to avoid suffocation.

Keep the appliance and connecting cable in a location that is not accessible to children under 8 years old.

Improper handling causes the risk of fire. Only charge the battery using the included charging cable. Do not disassemble the battery. Do not short-circuit the appliance and do not throw it into fire. Do not open or otherwise destroy the appliance.

The appliance is charged with electric current. There is therefore a danger of electric shock. The appliance is only to be used with the power supply unit (GQ06-050050-AG) provided with the appliance.

Make sure that the charging cable is not kinked or pinched and make sure that the charging cable and the appliance do not come in contact with sources of heat (e.g. hobs, gas flames).

Do not carry the appliance by the charging cable. Disconnect the charging cable from the appliance immediately after the charging process is complete or in the event of damage or danger.

Unplug the appliance from the charging cable prior to cleaning or maintenance. As long as the power adapter is plugged in, there is a voltage inside the appliance, even if the appliance is switched off.

Check the appliance for damage prior to each use. If you detect any transport damage, contact the dealer from whom you purchased the appliance immediately. Never operate an appliance that have been dropped or damaged.

The battery cells within must not be dismantled, short circuited or placed against a metal surface.

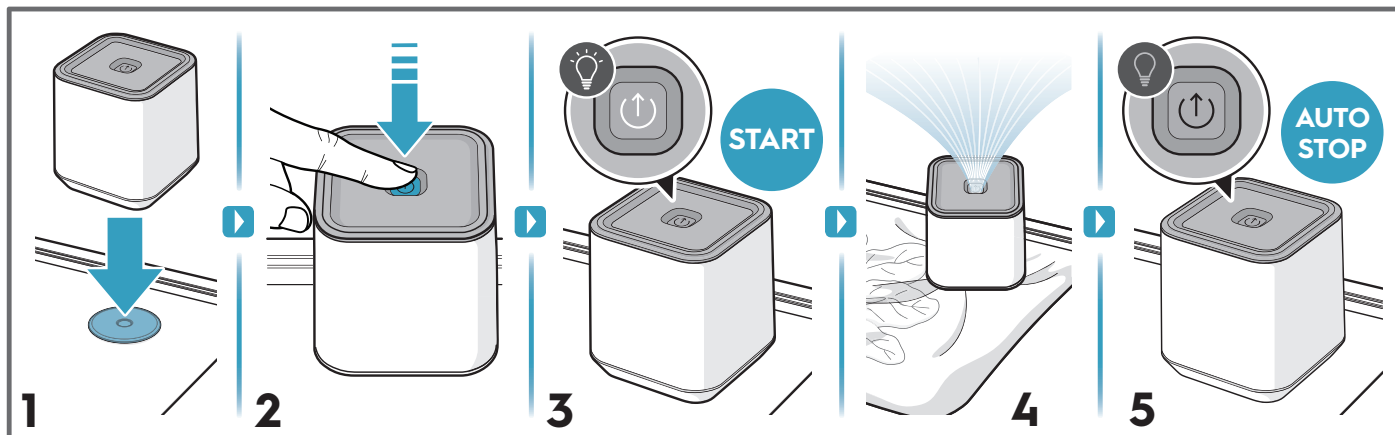
This appliance contains batteries that are non-replaceable.

All service or repairs must be carried out by an authorized service centre.

WARNING: California Residents: for cancer and reproductive harm information, visit www.P65Warnings.ca.gov

4

OPERATION



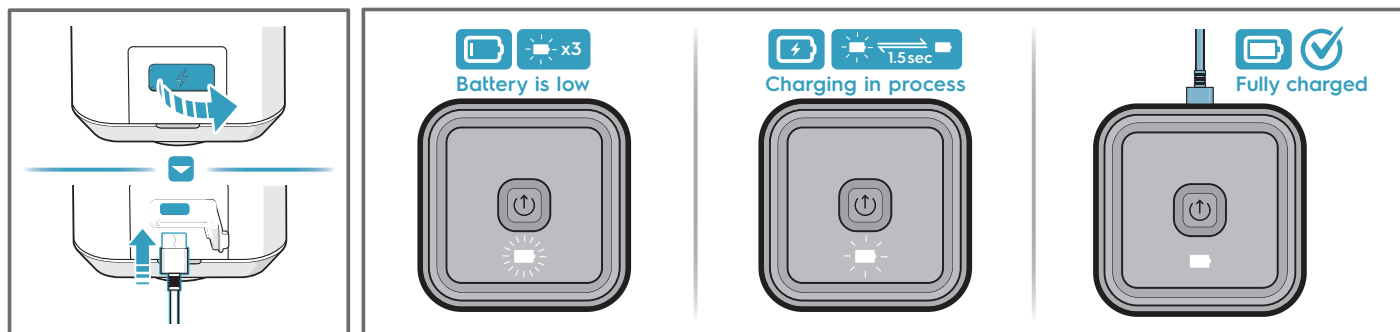
Seal Food in Reusable Container

1. Connect the vacuum pump to the vacuum container.
2. Press the start button on the vacuum pump.
3. The button will light to indicate that the vacuum pump has started.
4. The container will deflate as the vacuum pump removes air.
5. The vacuum pump will stop automatically.

Reading Indicator Lights

- Vacuum sealing in process: Indicator light flashing/pulsing
- Vacuum sealing complete: Indicator light lights up for 2 seconds and then turns off
- Low battery: Battery symbol starts blinking 3x
- Charging: Battery symbol pulsing slow
- Fully charged and ready to unplug: Battery symbol glowing

Recharging

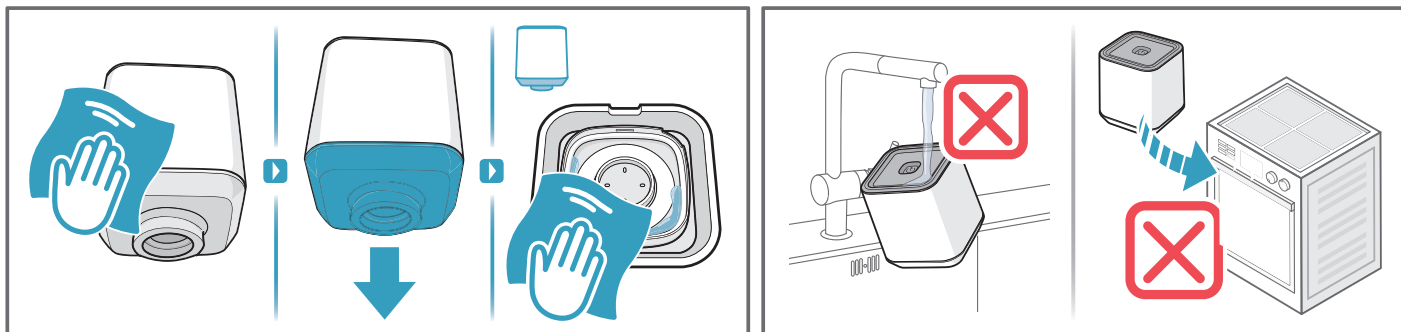


1. Open the port on the side of the pump to connect the power cable.
2. Recharge when the indicator shows that the battery is low.
3. The indicator will show that the battery is charging.
4. Disconnect the cable when the battery is full and close the charge port.

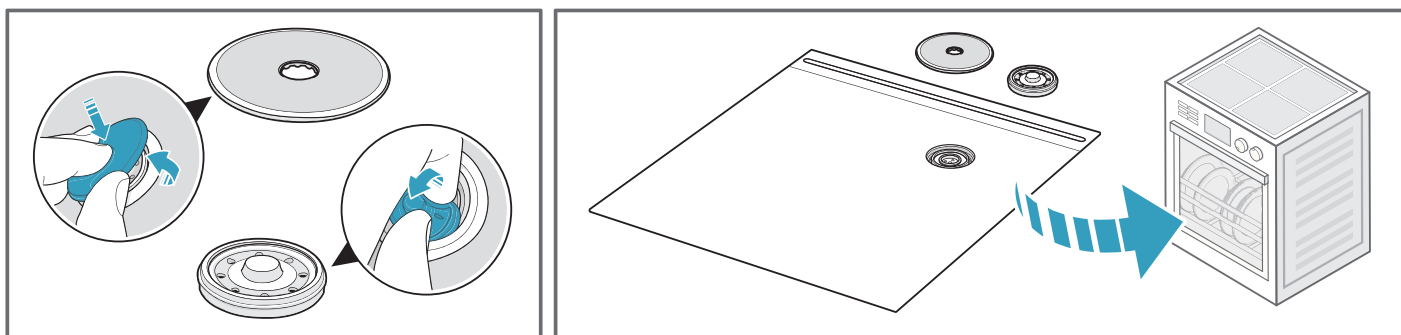
Cleaning

Clean the vacuum pump with a damp cloth.

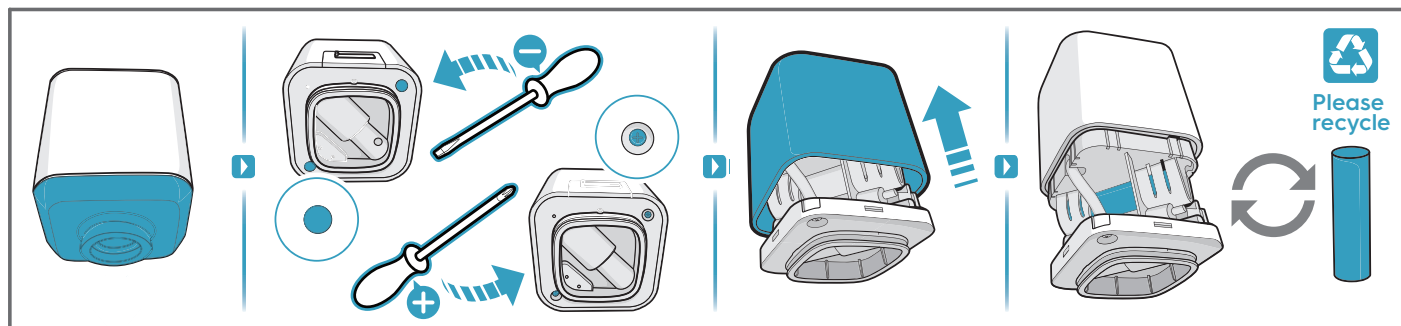
DO NOT immerse the pump in water or place it in a dishwashing machine.



To clean the vacuum container, disassemble the pump connection port and place all of the parts in a dishwasher. When placing the container in the dishwasher, turn the container inside out so the interior is exposed to the cleaning solution.



Battery Removal



Recycling

This warranty does not cover reduction in battery runtime due to battery age or use, as the life of the battery depends upon the nature of use.

This symbol on the product or on its packaging indicates that the product may not be treated as household waste.

To recycle your product, please take it to an official collection point or to a service center that can remove and recycle the battery and electric parts in a safe and professional way. Follow your country's rules for the separate collection of electrical products and rechargeable batteries.



6

CARE & CLEANING

Troubleshooting

Problem	Cause	Remedy
The pump stops during the vacuum sealing process and does not turn back on.	The pump sucked in powder or direct liquids during the vacuum sealing process.	Do not turn the pump upside down. Remove the lower part and clean to ensure that nothing is in there. Make sure the pump are completely dry before operating again. Additional liquids may drip out. Repeat this process if the pump stops again.
The pump does not create vacuum when placed on a container or the vacuum does not last	The lid of the vacuum container, the silicone seal or the valve are positioned incorrectly.	Check that the positioning is correct and that the lid is properly closed.
	The silicone seal or the container valve are dirty or wet	Clean and dry the silicone seal and the valve of the container.
	The pump sits too loosely on the valve.	During vacuum sealing, lightly press the pump into the dock surrounding the valve to create a tight seal between the pump and the valve.
The above problems cannot be solved.	The battery of the pump is low or not charged.	Recharge the vacuum pump.
The pump does not respond to the On/Off button.	The vacuum pump could be broken.	Contact customer service. Do not try to repair the pump yourself.

Your appliance is covered by a one year limited warranty. For one year from your original date of purchase, Electrolux will pay all costs for repairing or replacing any parts of this appliance that prove to be defective in materials or workmanship when such appliance is installed, used and maintained in accordance with the provided instructions.

Exclusions

This warranty does not cover the following:

Products with original serial numbers that have been removed, altered or cannot be readily determined.

Product that has been transferred from its original owner to another party or removed outside the USA or Canada.

Rust on the interior or exterior of the unit

Products purchased "as-is" are not covered by this warranty.

Food loss due to any refrigerator or freezer failures.

Products used in a commercial setting.

Service calls which do not involve malfunction or defects in materials or workmanship, or for appliances not in ordinary household use or used other than in accordance with the provided instructions.

Service calls to correct the installation of your appliance or to instruct you how to use your appliance.

Expenses for making the appliance accessible for servicing, such as removal of trim, cupboards, shelves, etc., which are not a part of the appliance when it is shipped from the factory.

Service calls to repair or replace appliance light bulbs, air filters, water filters, other consumables, or knobs, handles, or other cosmetic parts.

Surcharges including, but not limited to, any after hour, weekend, or holiday service calls, tolls, ferry trip charges, or mileage expense for service calls to remote areas, including the state of Alaska.

Damages to the finish of appliance or home incurred during installation, including but not limited to floors, cabinets, walls, etc.

Damages caused by: services performed by unauthorized service companies; use of parts other than genuine Electrolux parts or parts obtained from persons other than authorized service companies; or external causes such as abuse, misuse, inadequate power supply, accidents, fires, or acts of God.

DISCLAIMER OF IMPLIED WARRANTIES; LIMITATION OF REMEDIES

CUSTOMER'S SOLE AND EXCLUSIVE REMEDY UNDER THIS LIMITED WARRANTY SHALL BE PRODUCT REPAIR OR REPLACEMENT AS PROVIDED HEREIN. CLAIMS BASED ON IMPLIED WARRANTIES, INCLUDING WARRANTIES OF MERCHANTABILITY OR FITNESS FOR A PARTICULAR PURPOSE, ARE LIMITED TO ONE YEAR OR THE SHORTEST PERIOD ALLOWED BY LAW, BUT NOT LESS THAN ONE YEAR. ELECTROLUX SHALL NOT BE LIABLE FOR CONSEQUENTIAL OR INCIDENTAL DAMAGES SUCH AS PROPERTY DAMAGE AND INCIDENTAL EXPENSES RESULTING FROM ANY BREACH OF THIS WRITTEN LIMITED WARRANTY OR ANY IMPLIED WARRANTY. SOME STATES AND PROVINCES DO NOT ALLOW THE EXCLUSION OR LIMITATION OF INCIDENTAL OR CONSEQUENTIAL DAMAGES, OR LIMITATIONS ON THE DURATION OF IMPLIED WARRANTIES, SO THESE LIMITATIONS OR EXCLUSIONS MAY NOT APPLY TO YOU. THIS WRITTEN WARRANTY GIVES YOU SPECIFIC LEGAL RIGHTS. YOU MAY ALSO HAVE OTHER RIGHTS THAT VARY FROM STATE TO STATE.

If You Need Service

Keep your receipt, delivery slip, or some other appropriate payment record to establish the warranty period should service be required. If service is performed, it is in your best interest to obtain and keep all receipts. Service under this warranty must be obtained by contacting Electrolux at the addresses or phone numbers below.

This warranty only applies in the USA and Canada. In the USA, your appliance is warranted by Electrolux Major Appliances North America, a division of Electrolux Home Products, Inc. In Canada, your appliance is warranted by Electrolux Canada Corp. Electrolux authorizes no person to change or add to any obligations under this warranty. Obligations for service and parts under this warranty must be performed by Electrolux or an authorized service company. Product features or specifications as described or illustrated are subject to change without notice.

USA**1-877-435-3827**

Electrolux Major Appliances NA
10200 David Taylor Drive
Charlotte, NC 28262
ElectroluxAppliances.com

**Electrolux****Canada****1.800.265.8352**

Electrolux Canada Corp.
5855 Terry Fox Way
Mississauga, Ontario, Canada
L5V 3E4
ElectroluxAppliances.ca

