

Installation Instructions

Top Temperature and Pressure Relief Valve (T&P) Retrofit Kit GKTAKKRY

If you have any questions, call GE Appliances at 800.GE.CARES (800.432.2737) or visit our Website at: GEAppliances.com

THIS KIT REPLACES THE ORIGINAL TEMPERATURE AND PRESSURE RELIEF VALVE AND ANODE ROD ON SOME ELECTRIC OR GAS WATER HEATERS.

IMPORTANT SAFETY INFORMATION

⚠ CAUTION

Read the entire manual. Failure to follow these warnings can result in personal injury or property damage.

- These instructions are supplemental to the Water Heater Owner's Manual with use and care Instructions.

⚠ WARNING



- Electrical Shock Hazard

Turn off the circuit breaker, disconnecting power before beginning the installation. Replace all parts and panels before operating. Failure to do so can result in death or electrical shock.

⚠ WARNING

Risk of Unit Damage - The pressure rating of the relief valve must not exceed 150 PSI (1.03 MPa), the maximum working pressure of the water heater as marked on the rating plate.

A new combination temperature and pressure-relief valve, complying with ANSI Z21.22, is supplied and must remain installed in the opening provided and marked for this purpose on the water heater. No valve of any type should be installed between the relief valve and the tank. Local codes shall govern the installation of relief valves.

The BTUH rating of the relief valve must not be less than the input rating of the water heater as indicated on the rating label located on the front of the heater.

Connect the outlet of the relief valve to an open drain so that the discharge water cannot contact electrical parts or persons eliminating potential water damage.

Piping used should be of a type approved for hot water distribution. The discharge line must be no smaller than the outlet of the valve and must pitch downward from the valve to allow complete drainage (by gravity) of the relief valve and discharge line. The end of the discharge line should not be threaded or concealed and should be protected from freezing. No valve of any type, restriction or reducer coupling should be installed in the discharge line.

⚠ CAUTION

To reduce the risk of excessive pressures and temperatures in this water heater, install temperature and pressure protective equipment required by local codes and no less than a combination temperature and pressure relief valve certified by a nationally recognized testing laboratory that maintains periodic inspection of production of listed equipment or materials, as meeting the requirements for Relief Valves and Automatic Gas Shutoff Devices for Hot Water Supply Systems, ANSI Z21.22. This valve must be marked with a maximum set pressure not to exceed the marked maximum working pressure of the water heater. Install the valve into an opening provided and marked for this purpose in the water heater, and orient it or provide tubing so that any discharge from the valve exits only within 6 inches above, or at any distance below, the structural floor, and does not contact any live electrical part. The discharge opening must not be blocked or reduced in size under any circumstances.

BEFORE YOU BEGIN

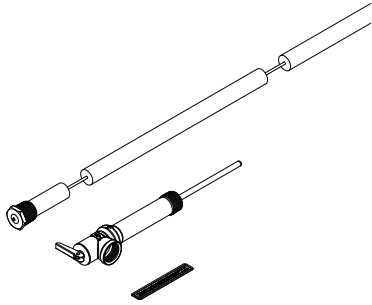
Read these instructions completely and carefully.

- **IMPORTANT** – Save these instructions for local inspector's use.
- **IMPORTANT** – Observe all governing codes and ordinances.
- **Note to Installer** – Be sure to leave these instructions with the Consumer.
- **Note to Consumer** – Keep these instructions for future reference.
- Proper installation is the responsibility of the installer.
- Accessory failure due to improper installation is not covered under the Warranty.

Installation Instructions

CONTENTS

- ☐ Anode Rod - Segmented Magnesium
- ☐ Temperature and Pressure Relief Valve (T&P) – Long Body, Long Element
- ☐ Label - Retrofit Kit



TOOLS AND MATERIALS YOU WILL NEED TO INSTALL DUCT KIT

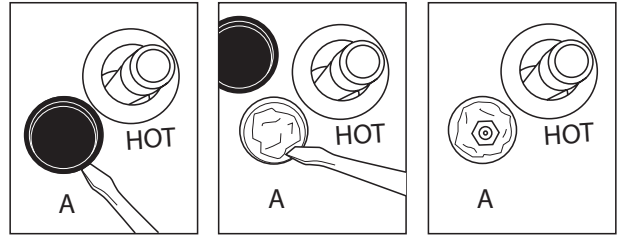
- ☐ Safety Glasses
- ☐ Gloves
- ☐ Garden Hose
- ☐ Vacuum Cleaner
- ☐ Flathead Screwdriver
- ☐ Crescent Wrench or Pipe Wrench
- ☐ Wire Cutters
- ☐ 1/2" ratchet/wrench handle at least 16" long (for high torque)
- ☐ 3" ratchet extension
- ☐ 1-1/16" socket
- ☐ Thread Tape and Thread Sealant

1 PREPARING FOR INSTALLATION

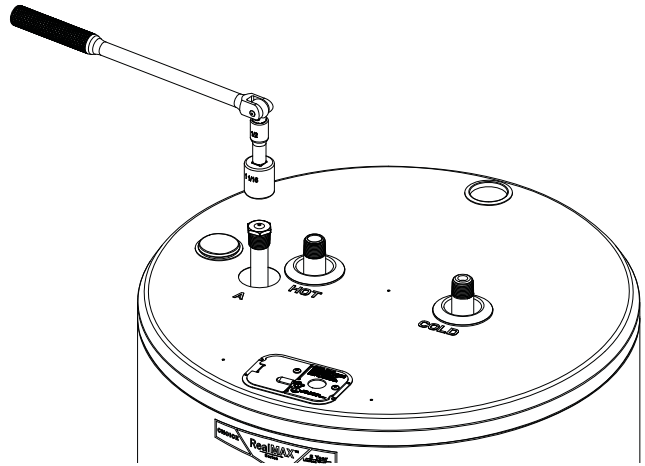
1. Isolate energy and drain the water tank (if the water heater was previously installed).
 - For previously installed electric units, switch off electric breaker.
 - For previously installed gas units, set control valve to "pilot" or close main gas valve.
 - For new units, install kit prior to connecting to water/electric and filling with water.
2. Turn off inlet water valve for the cold-water source to the water heater; it should be isolated from electricity, gas, and water.
3. If the unit has water in it, connect a garden hose to the bottom drain valve and run to a nearby drain. Open the bottom drain valve. You may need to toggle the T&P valve handle to release pressure to drain the tank. **NOTE:** The water level in the tank must fall at least below the side T&P valve port and must be without pressure.
4. When water level is below the T&P, open the T&P valve handle to ensure there is no flowing water or residual water pressure from the T&P.

2 REMOVING EXISTING ANODE ROD AND T&P

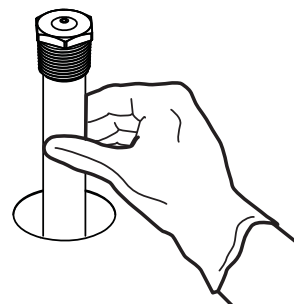
1. Locate the existing anode rod "A." If a cap is present, carefully remove cap using a flat-head screwdriver. Retain the plastic cover. If foam insulation obstructs access to the hex nut, carefully scrape it away by hand using a flat-head screwdriver, then vacuum up any foam debris.
NOTE: The anode will likely be ~3" down in the foam.



2. Using a 1/2" ratchet/wrench at least 16" long with the 3" extension and a 1-1/16" socket, unscrew the high-torque anode by turning counter-clockwise.



3. Remove anode rod by lifting straight up (once fully loosened). Needle-nose pliers may be needed to help pull up a few inches from foam hole.
NOTE: The original anode rod will not be used again when installing this kit. It will be replaced with the segmented anode rod.

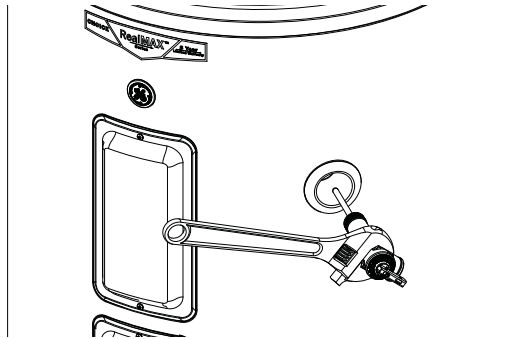


Installation Instructions

2 REMOVING EXISTING ANODE ROD AND T&P (Cont.)

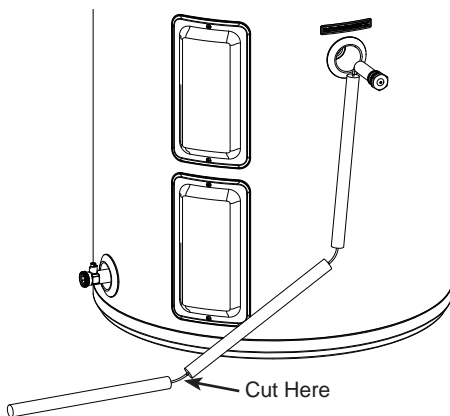
- Using a crescent wrench or pipe wrench, carefully remove existing threaded T&P by turning counter-clockwise.

NOTE: The original T&P will not be used again when installing this kit. It will be replaced with a new T&P (longer thermal element, longer brass body) provided in the kit. Set aside or discard the original T&P appropriately.



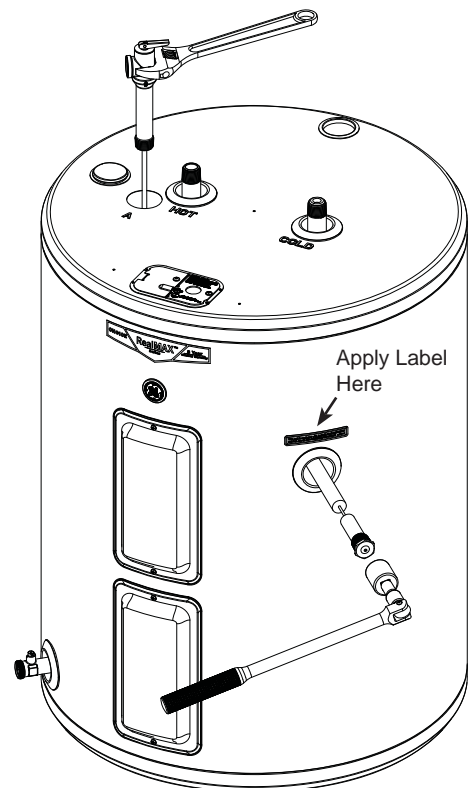
NOTE: The segmented anode will be installed in the side port where the original T&P was previously installed.

- Check length of segmented anode by holding it outside the tank by the initial short-threaded link to replicate horizontal condition and height when installed.
 - Cut segmented anode rod to length (as needed) using wire cutters on the steel-braided cable.
- NOTE:** It is acceptable if the anode rod is partially touching the bottom of the tank. For "Low Boy" models, it is recommended to remove only the last link.



3 INSTALL NEW ANODE ROD AND T&P

- Insert new segmented anode rod into side port of the tank. It is important to apply thread tape and thread sealant to the threads accordingly prior to fully inserting.
- Tighten segmented anode rod using a 1/2" ratchet, 3" extension, and 1-1/16" socket. The torque should be tight enough to prevent leakage, but not excessively tight.
- Locate the T&P provided with the kit; it will have a longer element and a longer brass body than the original T&P.
- Apply thread tape and thread sealant to the threads, then insert new T&P in the top port where original anode was installed.
- Using a crescent wrench or pipe wrench, tighten T&P by turning clockwise. Rotate carefully to the desired angle that allows connecting the drain pipe within 6" of the floor as described on page 1. Do not over-rotate in a way that would require loosening again.
- Locate the label and apply below the water heater model/serial rating plate and above the side installed segmented anode.



4 FILL THE WATER HEATER

▲WARNING Risk of Unit Damage - The tank must be full of water before heater is turned on. The water heater warranty does not cover damage or failure resulting from operation with an empty or partially empty tank.

Make certain the drain valve is completely closed.

Open the shut-off valve in the cold water supply line.

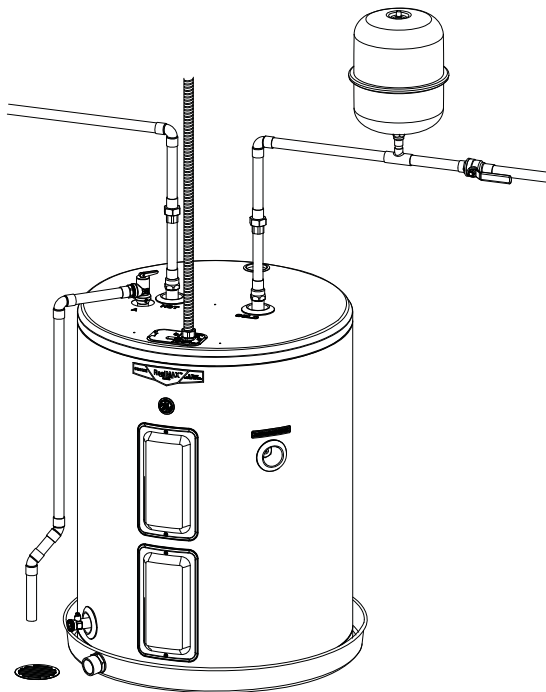
Open each hot water faucet slowly to allow the air to vent from the water heater and piping.

A steady flow of water from the hot water faucet(s) indicates a full water heater.

Condensation can form on the tank and fittings when it is first filled with water. Condensation may also occur with a heavy water draw and very cold inlet water temperature.

This condition is not unusual and will disappear once water is heated. If condition persists, examine fittings for potential leaks and repair, as required.

Check for any leaks.



5 RESTORE POWER

Restore power. If the water heater is electric, re-energize the circuit breaker. If the water heater uses gas, consult the manufacturer's instructions on relighting the gas burner.

Limited Warranty

GEAppliances.com

Please contact 800.626.2000 to initiate warranty process.

For the period of	GE Appliances covers
One year From the date of the original purchase	If the accessory fails due to a defect in materials or workmanship, during the limited one year warranty , GE Appliances will replace your accessory with a new or remanufactured accessory.

What GE Appliances will not cover:

- Failure of the accessory if it is abused, misused, altered or used for other than the intended purpose.
- Damage to the accessory caused by accident, lightning, fire, floods or acts of God.
- Incidental or consequential damage caused by possible defects with this accessory, its installation or repair.
- If accessory is removed from original installation location.
- Damage, malfunction or failure caused by the use of repair service not approved by GE Appliances.
- Damage, malfunction or failure caused by the use of unapproved parts or components.

EXCLUSION OF IMPLIED WARRANTIES

Your sole and exclusive remedy is accessory replacement as provided in this Limited Warranty. Any implied warranties, including the implied warranties of merchantability or fitness for a particular purpose, are limited to one year or the shortest period allowed by law.

For sale in the 50 United States and the District of Columbia only: This limited warranty is extended to the original purchaser and any succeeding owner for accessories purchased for home use within the USA. Some states do not allow the exclusion or limitation of incidental or consequential damages. This limited warranty gives you specific legal rights, and you may also have other rights which vary from state to state. To know what your legal rights are, consult your local or state consumer affairs office or your state's Attorney General.

For accessory purchased outside of the US, contact your dealer for Warranty and Service information.

Warrantor: GE Appliances, a Haier company

Louisville, KY 40225