

VS24

FEATURES

Select our chamber-style vacuum to handle liquids and fragile items (Can seal without vacuum, unlike countertop products)

Choose among four vacuum pressure settings and four heat-sealing levels

Includes a special attachment to seal and preserve opened wine bottles

Install near your Wolf ovens and other products for speed marinating and convenient sous vide prep

Conceal the drawer with hidden controls and handleless design

Designed for 24-30" panels

ACCESSORIES

24" Black Glass Front Panel

24" Stainless Front Panel

30" Black Glass Front Panel

30" Stainless Front Panel

Integrated Front Panel

Large Bags - 9 1/2" x 13 5/8"

Small Bags - 7 1/4" x 10 7/8"

Wine Stoppers

Accessories available through an authorized dealer. For local dealer information, visit subzero-wolf.com/locator.



FRONT PANEL OPTIONS



24" DRAWER FRONT STAINLESS PANEL



30" DRAWER FRONT STAINLESS PANEL



24" DRAWER FRONT BLACK PANEL



30" DRAWER FRONT BLACK PANEL

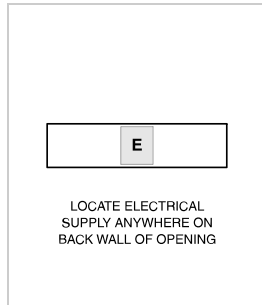


CUSTOM PANEL
Integrated Front Panel Kit Required

PRODUCT SPECIFICATIONS

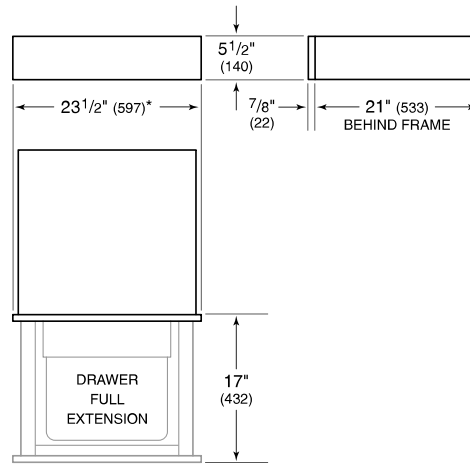
Model	VS24
Capacity	0.25 cu. ft.
Weight	76 lbs
Electrical Supply	3-prong grounding-type
Electrical Service	10 amp dedicated circuit
Power Cord Length	3 Feet
Receptacle	3-prong grounding-type

ELECTRICAL



NOTE: Dimensions in parenthesis are in millimeters unless otherwise specified

DIMENSIONS



*29 7/8" (759) width for 30" panel.

STANDARD INSTALLATION

