

## CHESTERFIELD

### TUB AND HANDSHOWER SET

### Features

Solid brass construction  
Quarter-turn washerless ceramic disc valve cartridges  
3/4" NPT hot and cold inlet fittings  
9.11" (23.1 cm) tub spout reach from inlet fittings (c-c)  
2.08" (5.3 cm) handshower diameter  
For deck-mounted configurations  
ADA Compliant (Handles Only)  
1.8 GPM (6.8 LPM) Max, Handshower Only

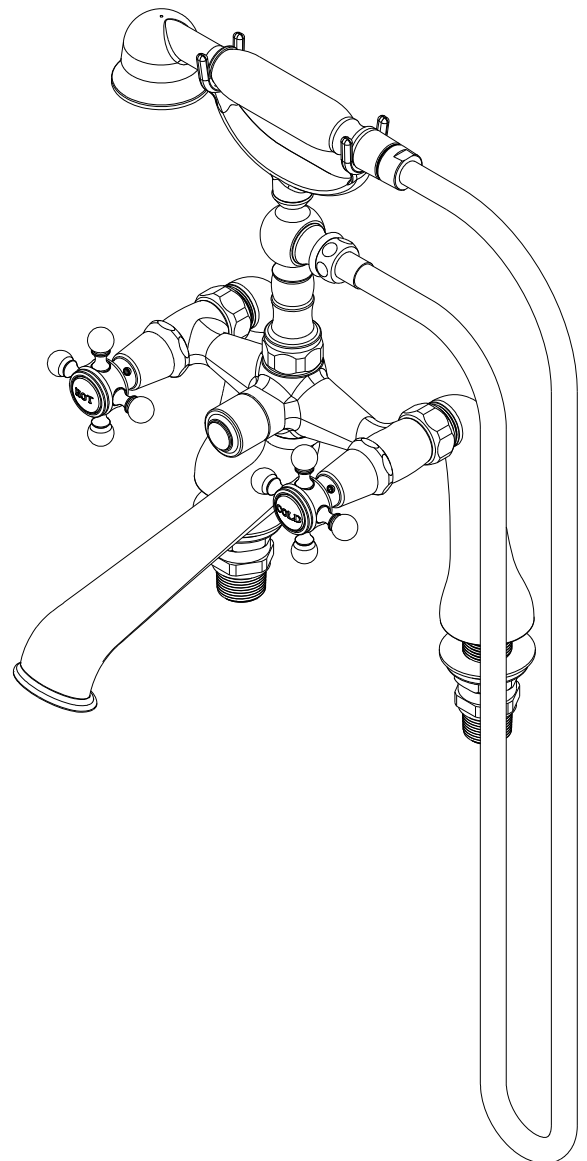
# 933



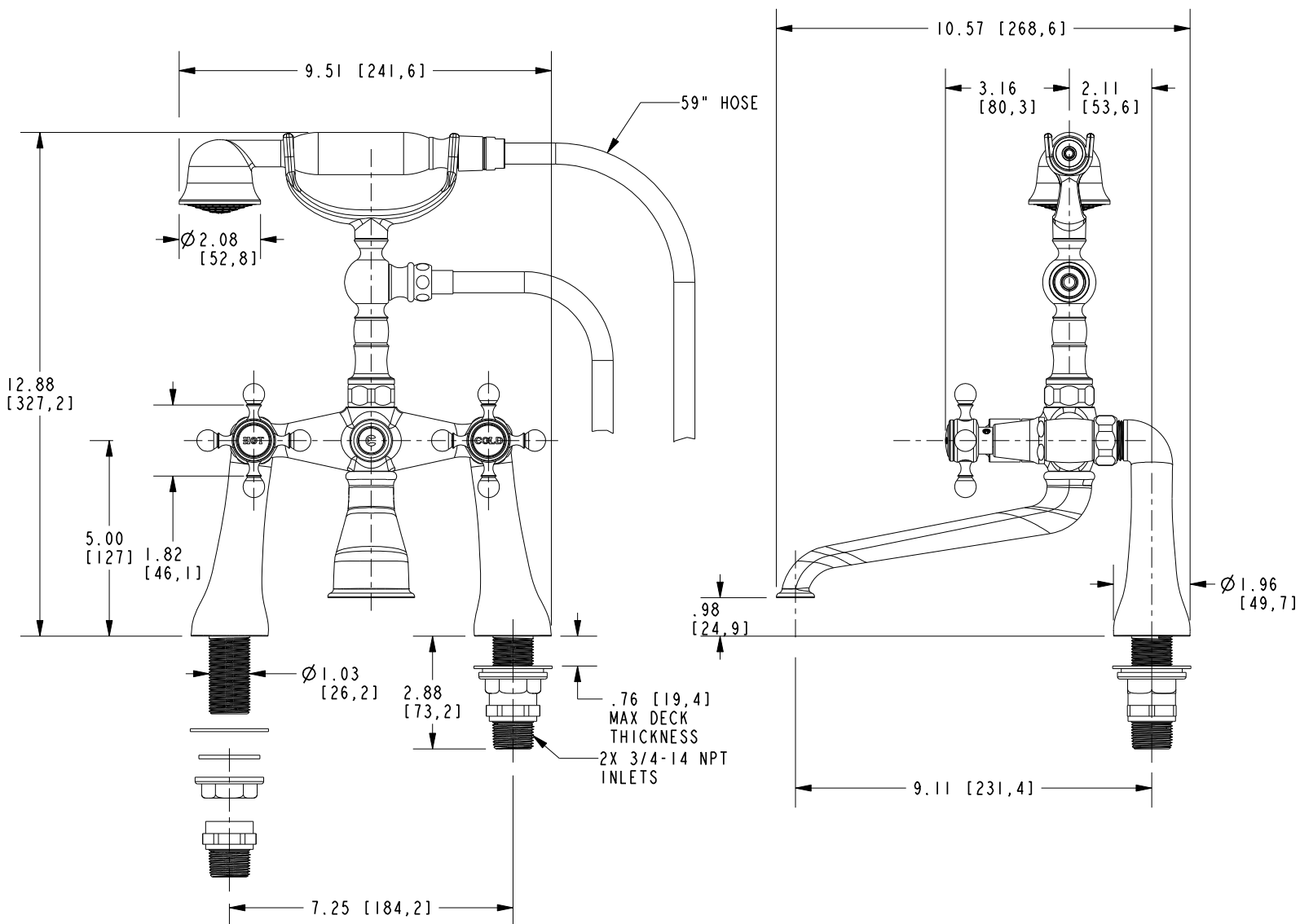
### Codes / Standards Compliance

Meets or exceeds the following at date of manufacture:

ASME A112.18.1/CSA B125.1  
IAPMO/cUPC  
IPC  
ADA & ICC/ANSI A117.1 (Handle Only)  
Energy Policy Act of 1992  
EPA WaterSense  
California Energy Commission  
ASME A112.18.3 (Back Flow)  
All applicable US Federal and State material regulations



### PRODUCT DIMENSIONS *(Units are in inches)*



©2025 NewportBrass