

## Features

- Solid brass construction
- Single-post, open roller design
- Complements Surface product series
- Left hand mounting orientation

## Codes / Standards Compliance

Meets or exceeds the following at date of manufacture:

- All applicable US Federal and State material regulations

## Colors / Finishes

- PC: Polished Chrome
- SN: Satin Nickel



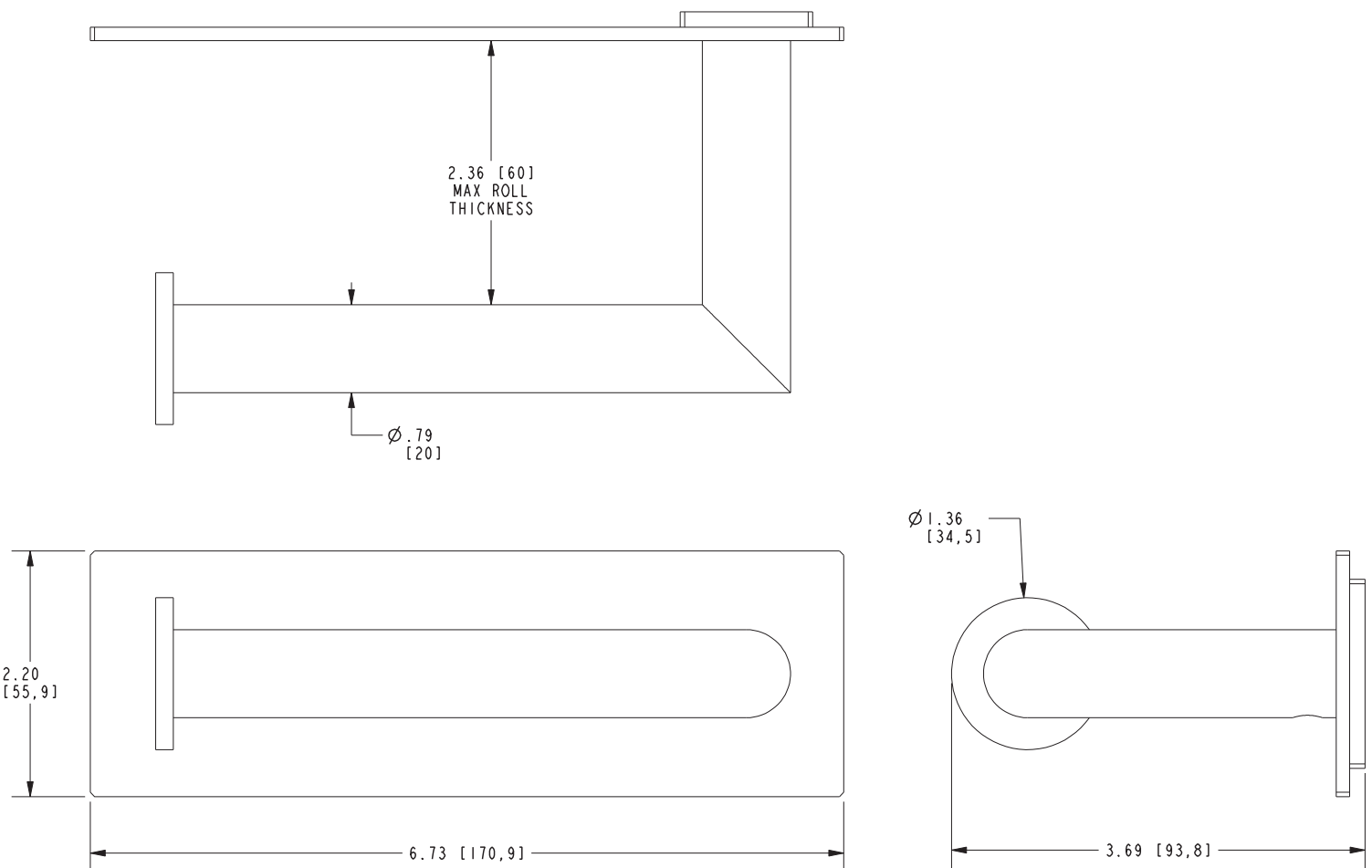
## Specified Model

Model	Description	Colors   Finishes
2806L	Open Toilet Tissue Holder	<input type="checkbox"/> PC <input type="checkbox"/> SN

## Product Specification: Add "Color / Finish" Suffix to Model Number Below

The Toilet Tissue Holder shall be made of solid brass construction and incorporate a single-post, open roller design. Toilet Tissue Holder shall complement Ginger Surface product series. Toilet Tissue Holder shall be Ginger Model 2806L/\_\_\_\_\_.

# 2806L



## Surface Toilet Tissue Holder 2806L