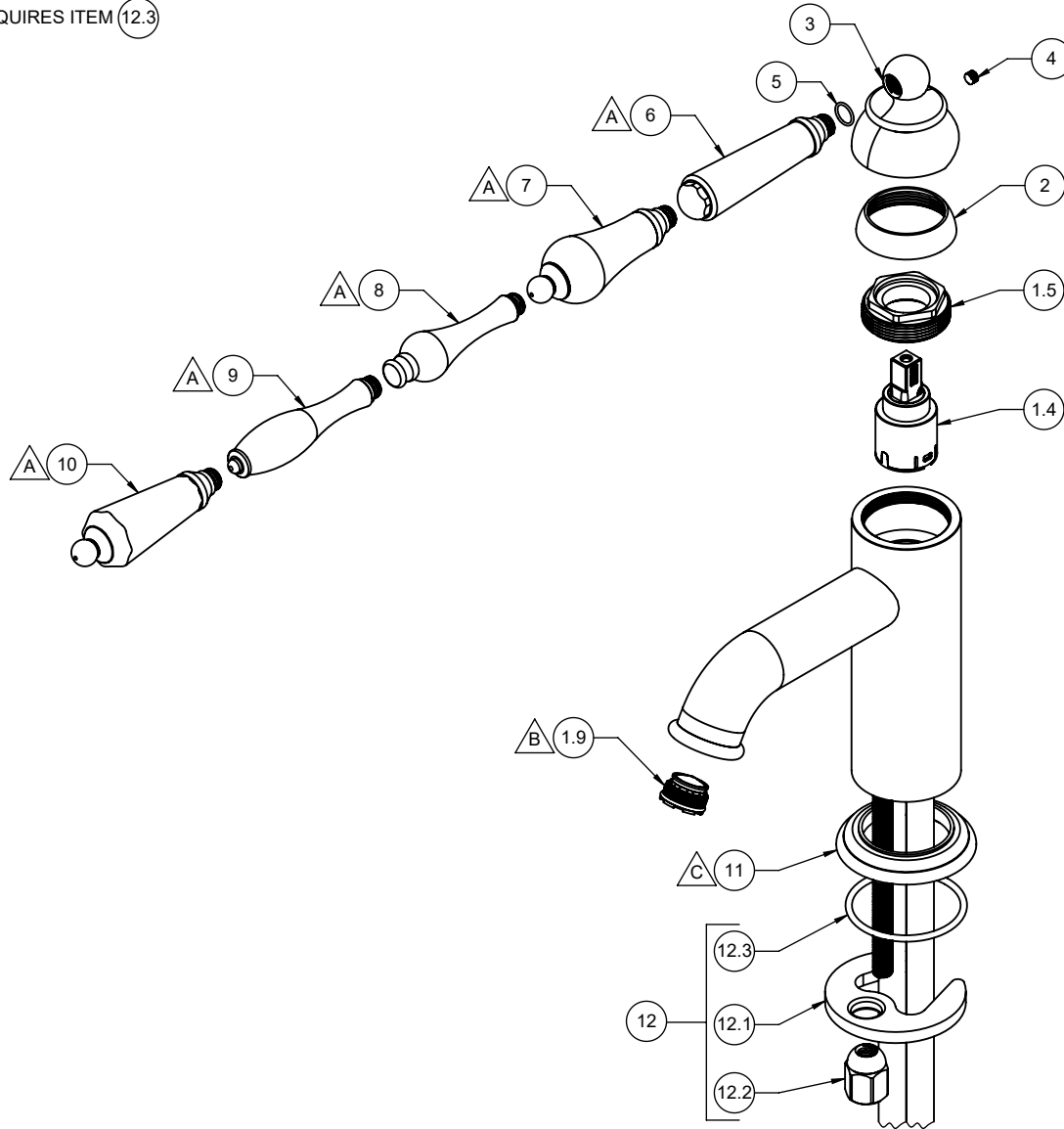


- △ A REQUIRES ITEM 5
- △ B REQUIRES ITEM 13
- △ C REQUIRES ITEM 12.3



3301-1	3301-2-H61
3301-2	3301-1-H64
3301-1-H55	3301-2-H64
3301-2-H55	3301-1-H68
3301-1-H61	3301-2-H68

To order spare parts add and/or replace as stated below:

SPD- prefix added to part number(s)
-ZZ replaced with finish code (see finish table)
-WW replaced with **-90** (light finish) or **-96** (dark finish)

Ex: **SPD-7-100362-PC** or **SPD-86030-96**

ITEM	PART NO.	DESCRIPTION	QTY.
1.4	880102-99	CART 25MM, SNGL LVR	1
1.5	10054-98	NUT, PACKING, CARTRIDGE	1
1.9	880357-81	INSERT, 1.2 GPM, TJ AERATED (PCA CACHE) - PINK	1
2	10043-ZZ	BONNET	1
3	10226-ZZ	CAP, SNGL HOLE LAV, TRADITIONAL	1
4	86047-WW	SETSCREW 10-24 X 3/16 SCKT HD CONE PT SS	1
5	87030-80	O-RING 7.00 X 1.00 (NA) BUNA-N A70	1
for 33 Series	6	7-100092-ZZ ASM, METAL LVR ONLY, 33 SERIES	1
for -H55	7	7-100095-ZZ ASM, BULBOUS METAL LVR ONLY	1
for -H61	8	10171-ZZ HANDLE, LEVER, TRAD	1
for -H64	9	641633-ZZ LEVER, HANDLE, 64	1
for -H68	10	7-100096-ZZ ASM, FLUTED METAL LVR ONLY	1
	11	10176-ZZ BASE RING, TRAD	1
	12	6-200057-99 KIT, MOUNTING HDW, SNGL HOLE (incl. 12.1, 12.2, 12.3)	1
	12.1	880309-98 MOUNTING BRACKET, SINGLE HOLE CRESCENT	1
	12.2	10184-98 NUT, HEX W/ DOME	1
	12.3	622055-99 O-RING 44.12 X 2.62 (-132) BUNA-N A70	1
	13	880079-99 KEY, TJ AERATED CACHE	1
for ITEM 4	15	882043-99 KEY, ALLEN, 3/32", BLACK	1