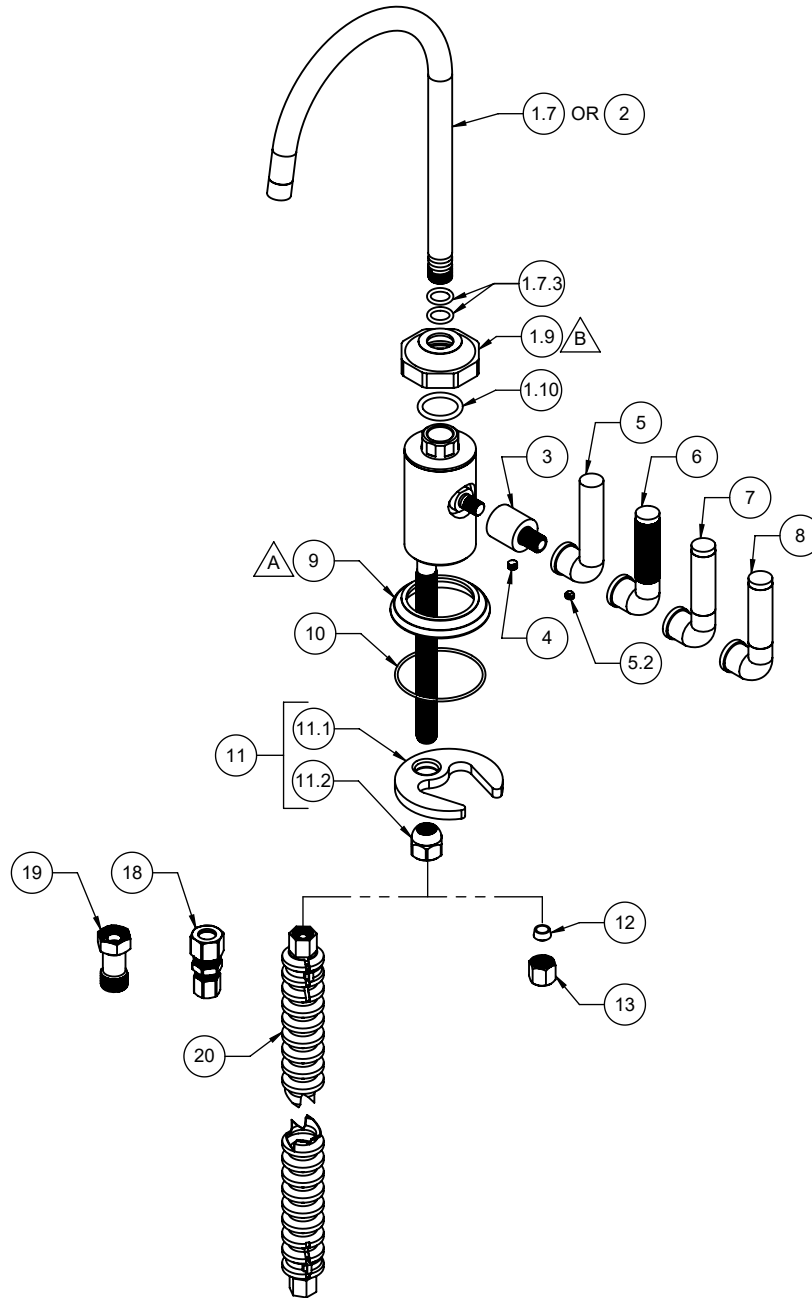


- △ REQUIRES ITEM 10
△ REQUIRES ITEM 1.10



9620-K30-SL 9625-K30-SL
9620-K30-KL 9625-K30-KL
9620-K30-FL 9625-K30-FL
9620-K30-TL 9625-K30-TL

To order spare parts add and/or replace as stated below:

SPD- prefix added to part number(s)
-ZZ replaced with finish code (see finish table)
-WW replaced with **-90** (light finish) or **-96** (dark finish)

Ex: **SPD-7-100362-PC** or **SPD-86030-96**

	ITEM	PART NO.	DESCRIPTION	QTY.
for 9620 Series	1.7	5-100122-ZZ	ASM, CONT/TRANS WATER DISP SPOUT <i>(incl. 1.7.3)</i>	1
	1.7.3	87170-80	O-RING Ø10.00 X 2.00 (NA) EPDM A70 (NSF-61-12 & WRAS)	2
	1.9	50791-ZZ	TRIM, OCTAGON H/C BODY	1
	1.10	622070-99	O-RING 18.72 X 2.62 (-116) BUNA-N A70	1
for 9625 Series	2	5-100299-ZZ	ASM, CONT SPOUT HOT/COLD ONLY DISP - G2 <i>(incl. 1.7.3)</i>	1
	3	51184-ZZ	POST, INDUSTRIAL H/C ONLY LEVER	1
	4	86047-90	SETScrew 10-24 X 3/16 SCKT HD CONE PT SS	1
for SL Series	5	7-100296-ZZ	ASM, HANDLE, SMOOTH DISPENSER <i>(incl. 5.2)</i>	1
	5.2	86235-WW	SETScrew 10-24 X 1/8 SCKT HD CUP PT SS	1
for KL Series	6	7-100275-ZZ	ASM, HANDLE, KNURLED DISPENSER <i>(incl. 5.2)</i>	1
for FL Series	7	7-100276-ZZ	ASM, HANDLE, CARBON FIBER DISPENSER <i>(incl. 5.2)</i>	1
for TL Series	8	7-100567-ZZ	ASM, DISP HDL TEAK <i>(incl. 5.2)</i>	1
	9	50792-ZZ	BASE RING, INDUSTRIAL H/C DISP.	1
	10	87277-80	O-RING Ø45.00 X 1.50 (NA) BUNA-N A70	1
	11	6-200246	KIT, KITCHEN/H2O DISP MNT HDW <i>(incl. 11.1, 11.2)</i>	1
	11.1	880309-98	MOUNTING BRACKET, SINGLE HOLE CRESCENT	1
	11.2	10552-98	NUT, HEX W/ DOME 7/16-24	1
for 9620 Series	12	962586-99	1/4" CMP SLEEVE - PLASTIC	1
for 9620 Series	13	962587-99	COMP NUT, 1/4" (THD 7/16-24)	1
for 9625 Series	18	880331-98	FITTING, 3/8" CMP X 1/4" CMP STRAIGHT (NSF-61)	2
for 9625 Series	19	6-200281.05	ASM, 3/8" COMP (9/16"-24 MALE X FEMALE) FLOW RESTRICTOR - 0.5 GPM	1
for 9625 Series	20	6-200307	HOSE, HOT WATER, CORRUGATED	1
for ITEM 4, 5.2	21	882043-99	KEY, ALLEN, 3/32", BLACK	1