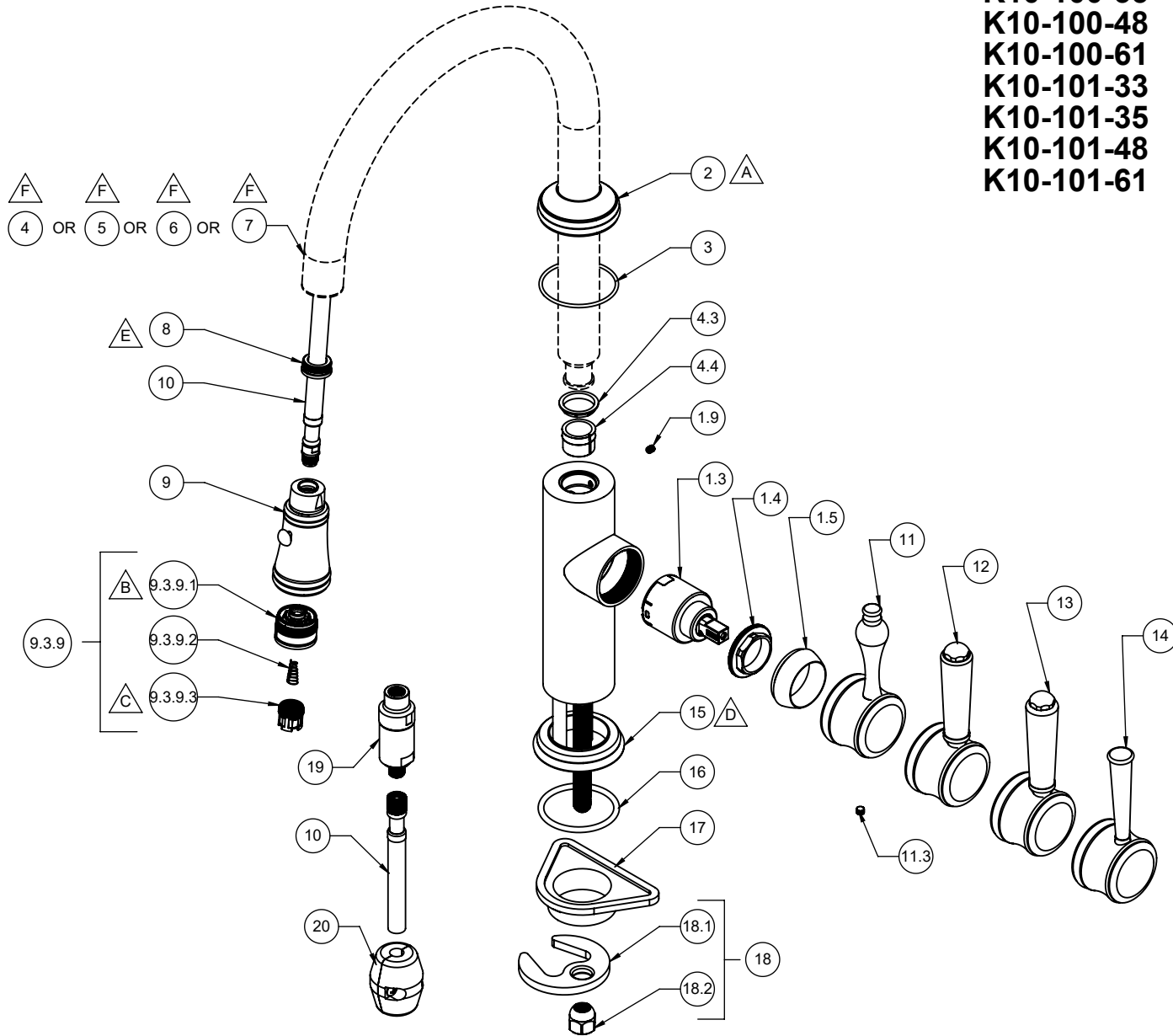
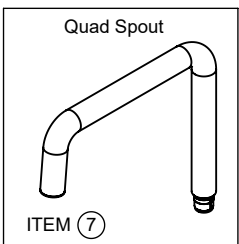
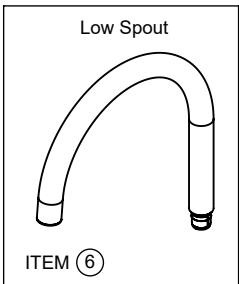
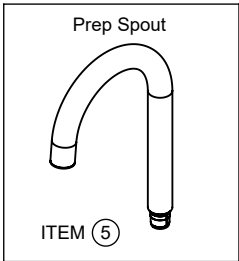
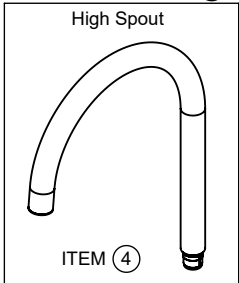


- △ A REQUIRES ITEM ③
- △ B REQUIRES ITEM ⑳
- △ C REQUIRES ITEM ㉒
- △ D REQUIRES ITEM ⑯
- △ E REQUIRES ITEM ㉕
- △ F REQUIRES ITEM ⑧

K10-100-33	K10-102-33
K10-100-35	K10-102-35
K10-100-48	K10-102-48
K10-100-61	K10-102-61
K10-101-33	K10-103-33
K10-101-35	K10-103-35
K10-101-48	K10-103-48
K10-101-61	K10-103-61



K10-100-33 **K10-102-33**
K10-100-35 **K10-102-35**
K10-100-48 **K10-102-48**
K10-100-61 **K10-102-61**
K10-101-33 **K10-103-33**
K10-101-35 **K10-103-35**
K10-101-48 **K10-103-48**
K10-101-61 **K10-103-61**

To order spare parts add and/or replace as stated below:

SPD- prefix added to part number(s)
-ZZ replaced with finish code (see finish table)
-WW replaced with **-90** (light finish) or **-96** (dark finish)

Ex: **SPD-7-100463-PC** or **SPD-86030-96**

	ITEM	PART NO	DESCRIPTION	QTY.
	11.3	86136-90	SETSCREW M5X0.8 X 5MM SCKT HD CONE PT SS	1
for 33 series	12	7-100203-ZZ	ASM, TRAD 33 KIT LEVER <i>(incl. 11.3)</i>	1
for 35 series	13	7-100204-ZZ	ASM, TRAD 35 KIT LEVER <i>(incl. 11.3)</i>	1
for 48 series	14	7-100341-ZZ	ASM, TRAD 48 KIT LEVER <i>(incl. 11.3)</i>	1
	15	10507-ZZ	BASE RING, KIT TRAD	1
	16	87139-80	O-RING Ø44.04 X 3.53 (-224) BUNA-N A70	1
	17	880325-81	SPACER, SINGLE HOLE MOUNTING	1
	18	6-200246	KIT, KITCHEN/H2O DISP MNT HDW <i>(incl. 18.1, 18.2)</i>	1
	18.1	880309-98	MOUNTING BRACKET, SINGLE HOLE CRESCENT	1
	18.2	10552-98	NUT, HEX W/ DOME 7/16-24	1
	19	6-200262	KIT, KITCHEN FAUCET CHECKVALVE - 1.85 GPM FLOW	1
	20	6-200249	KIT, KITCHEN HOSE WEIGHT 310g	1
for ITEM 9.3.9.1	21	880333-91	KEY, ALLEN 7.0MM, BLACK	1
	22	880317-81	TOOL, AERATOR INSERT	1
for ITEM 11.3	23	880007-91	KEY, ALLEN, 2.5MM	1
for ITEM 1.9	24	882042-99	KEY, ALLEN, 5/64", BLACK	1
	25	880533-81	TOOL, SQUEEZE UPGRADE	1

	ITEM	PART NO	DESCRIPTION	QTY.
	1.3	880297-99	CART 35MM, SNGL LVR (COLD TO HOT ROTATION)	1
	1.4	10564-98	NUT, 35MM CART KIT PACKING	1
	1.5	10565-ZZ	BONNET, STD KIT	1
	1.9	86031-WW	SETSCREW 8-32 X 3/16 SCKT HD CUP PT SS	1
	2	10550-ZZ	TRIM, TRAD KITCHEN BODY	1
	3	87325-80	O-RING Ø46.00 X 2.00 (NA) BUNA-N A70	1
for 100 series	4	7-100470-ZZ	ASM, Ø26MM MAIN KIT SPOUT LESS SPRAY INSERT <i>(incl. 4.3, 4.4)</i>	1
	4.3	10558-81	BUSHING, KIT SPT ADPTR	1
	4.4	11297-81	FRICTION RING, KIT SPT ADPTR - G2	1
for 101 series	5	7-100471-ZZ	ASM, Ø26MM PREP KIT SPOUT LESS SPRAY INSERT <i>(incl. 4.3, 4.4)</i>	1
for 102 series	6	7-100472-ZZ	ASM, Ø26MM LOW KIT SPOUT LESS SPRAY INSERT <i>(incl. 4.3, 4.4)</i>	1
for 103 series	7	7-100473-ZZ	ASM, 26MM 2 BEND KIT SPOUT LESS SPRAY INSERT <i>(incl. 4.3, 4.4)</i>	1
	8	10598-92	INSERT, KIT MAG PULL DN "IRON RING"	1
	9	7-100152-ZZ	SPRAY HEAD, Ø26MM MAG PULL DN - TRAD <i>(incl. 9.3.9)</i>	1
	9.3.9	6-200248	KIT, SPRAYER JET/AERATOR <i>(incl. 9.3.9.1, 9.3.9.2, 9.3.9.3)</i>	1
	9.3.9.1	11311-81	FACEPLATE, PULL DOWN SPRAY G2	1
	9.3.9.2	10535-90	SPRING, PULL DOWN SPRAY	1
	9.3.9.3	880553-81	INSERT, AERATOR W/ M16 X 1.0, FULL FLOW	1
	10	880338-99	HOSE, NYLON BRAIDED (DN6) W/ SILICONE, M10 MT X M10 F X 65" "NSF"	1
for 61 series	11	7-100191-ZZ	ASM, TRAD 42 KIT LEVER <i>(incl. 11.3)</i>	1