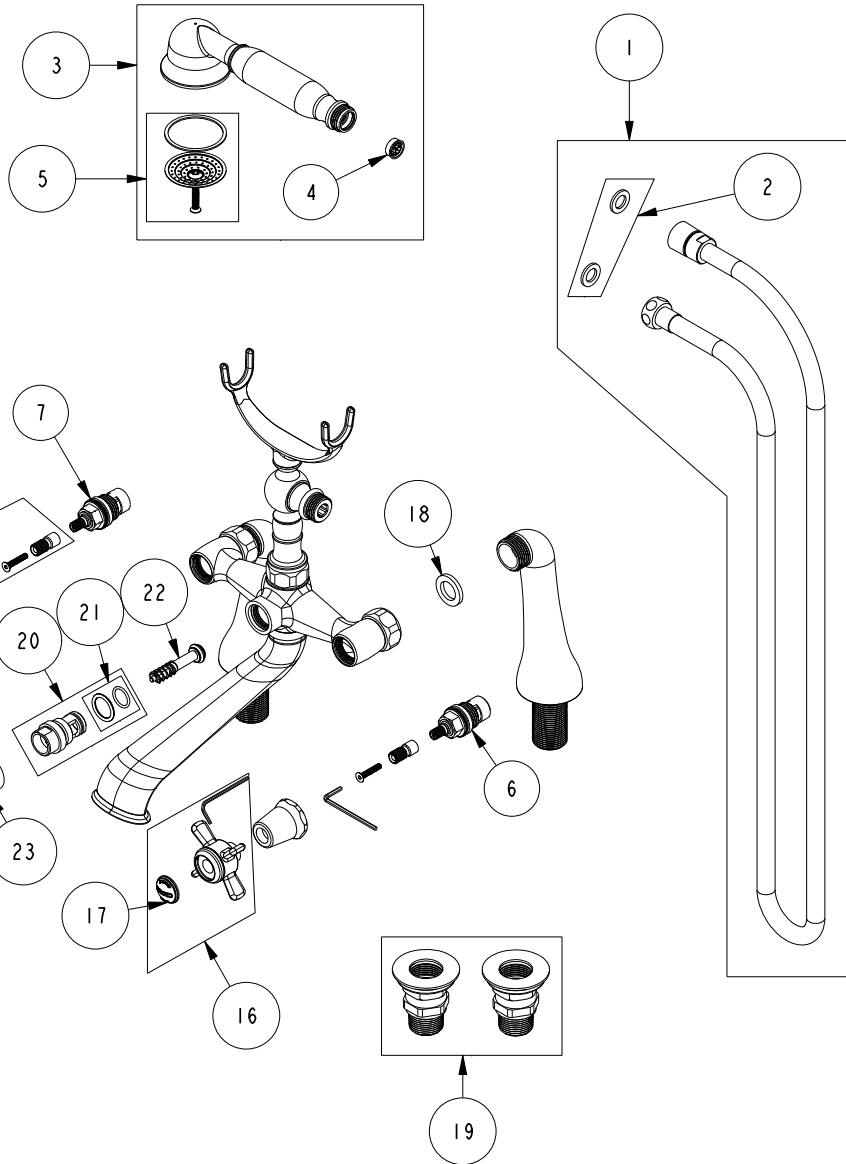


REPLACEMENT PARTS



ITEM	PT/ASSY	SPECIFY FINISH	DESCRIPTION
1	284_	YES	59 IN. SPIRAL SHOWER HOSE
2	91153		WSHR .438 X .738
3	281	YES	HAND SHOWER
4	12832		FLOW REGULATOR, 1.8 GPM MAX
5	20-856	YES	FACEPLATE ASSEMBLY
6	1-326		W/S CARTRIDGE FRICTION - HOT
7	1-325		W/S CARTRIDGE FRICTION - COLD
8	12259	YES	HANDLE BONNET - TUB FILLER
9	10-304		CARTRIDGE STEM ADAPTER KIT
10	2-114	YES	THIN BLADE X - HANDLE HOT
11	91023		O-RING, #2- 019, EPDM, 65-75 DURO, NSF 61
12	10816		PORC BUTTON - CHAUD (HOT)
13	92000		SCREW 8 - 32 X 1/8 SS
14	10814	YES	BEZEL
15	10192		HEX KEY TOOL, #8 5/64
16	2-115	YES	THIN BLADE X - HANDLE COLD
17	10815		PORC BUTTON - FROID (COLD)
18	91039		WSHR, .625 ID X 1.00 OD X .125 THK, RUBBER
19	1-049		MOUNTING HARDWARE
20	20-260	YES	DIVERTER HOUSING ASM
21	10-340		DIVERTER ASM O-RING KIT
22	20-259		DIVERTER ASM
23	13313	YES	DIVERTER BUTTON

TUB AND HANDSHOWER SET
1013

REV K EN-5011 5/29/25

NEWPORT BRASS.

t: 949.417.5207 | www.newportbrass.com