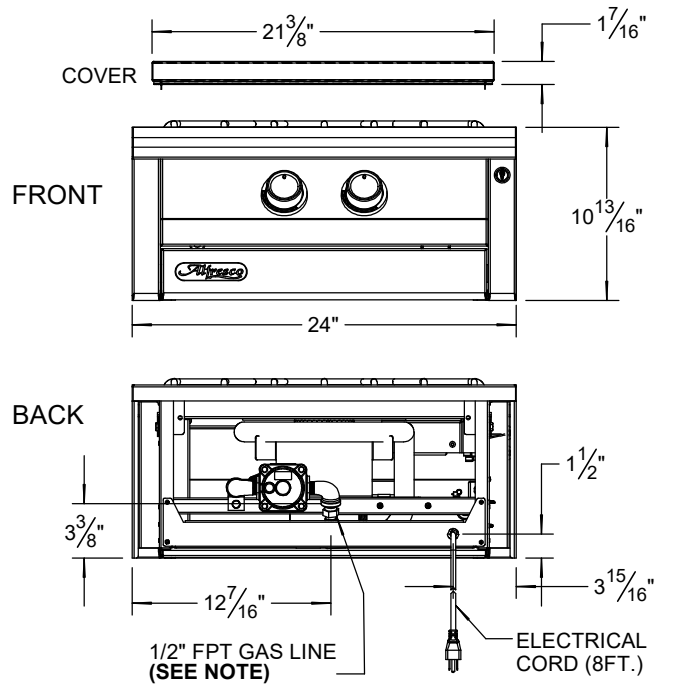
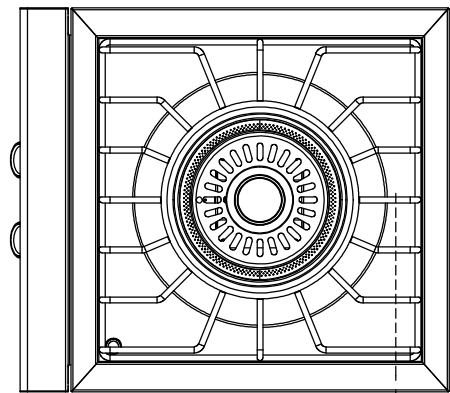
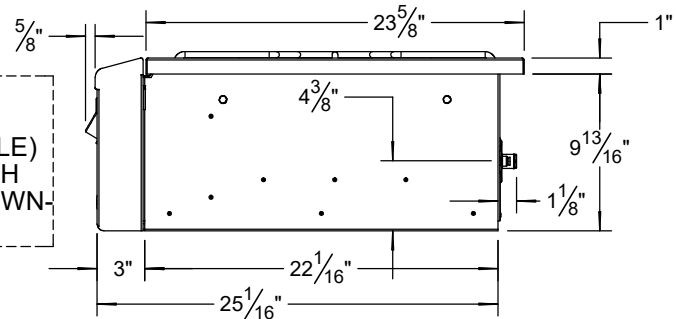
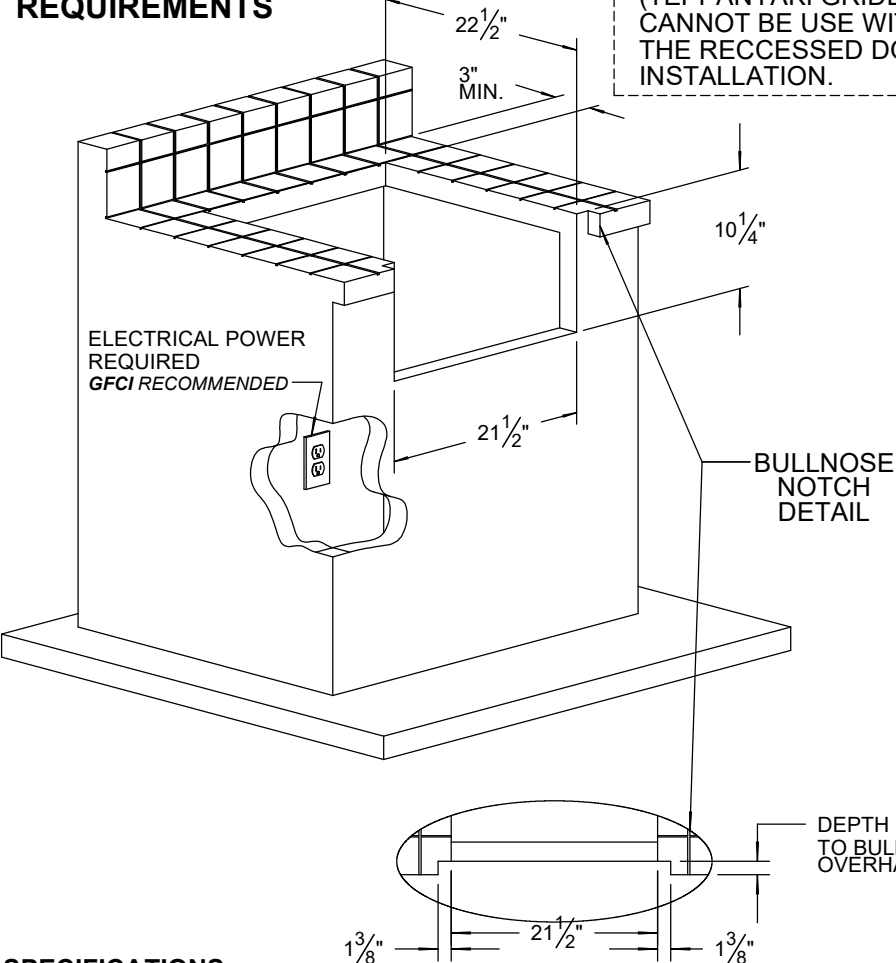


AIPGVP TYPICAL INSTALLATION

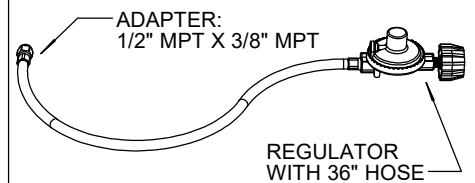


COUNTERTOP CUTOUT REQUIREMENTS



GAS CONNECTION SETBACK 3 $\frac{5}{16}"$

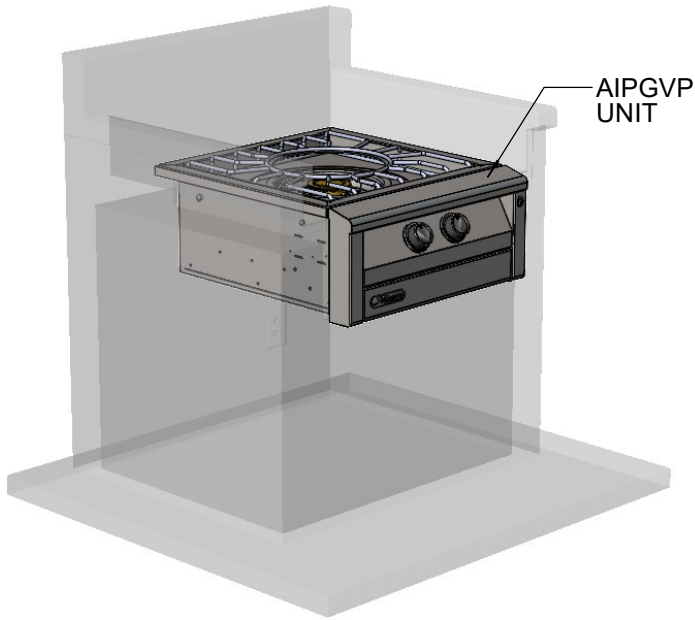
LP GAS SETUP:



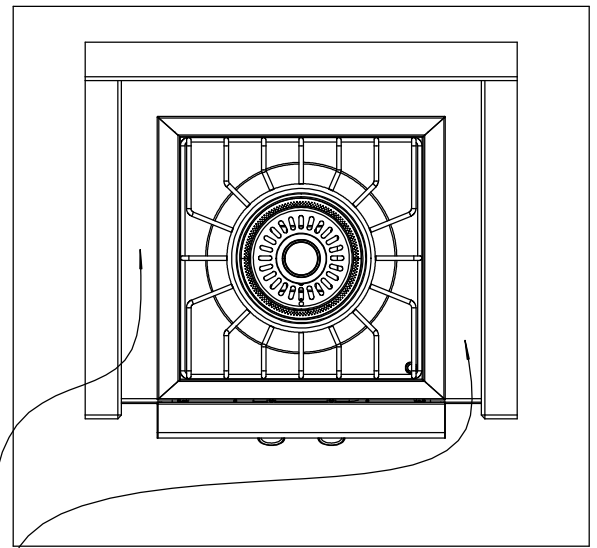
NOTE:
STANDARD UNIT HAS A NATURAL GAS (NG) CONNECTION WITH 1/2" NPT FITTING.
IF LIQUID PROPANE (LP) OPTION IS ORDERED THE UNIT IS SUPPLIED WITH A REGULATOR, HOSE AND ADAPTER FITTING AS SHOWN.

SPECIFICATIONS:

MAX. COMBINED BTUH = 65,000
FUEL = NG @ 4" W.C. OR LP @ 10 W.C.
ELECTRICAL POWER = 115 VAC - 50/60 Hz. - 1.0 A
GAS CONNECTION = 1/2" NPT (NG) OR 3/8" ODF (LP)

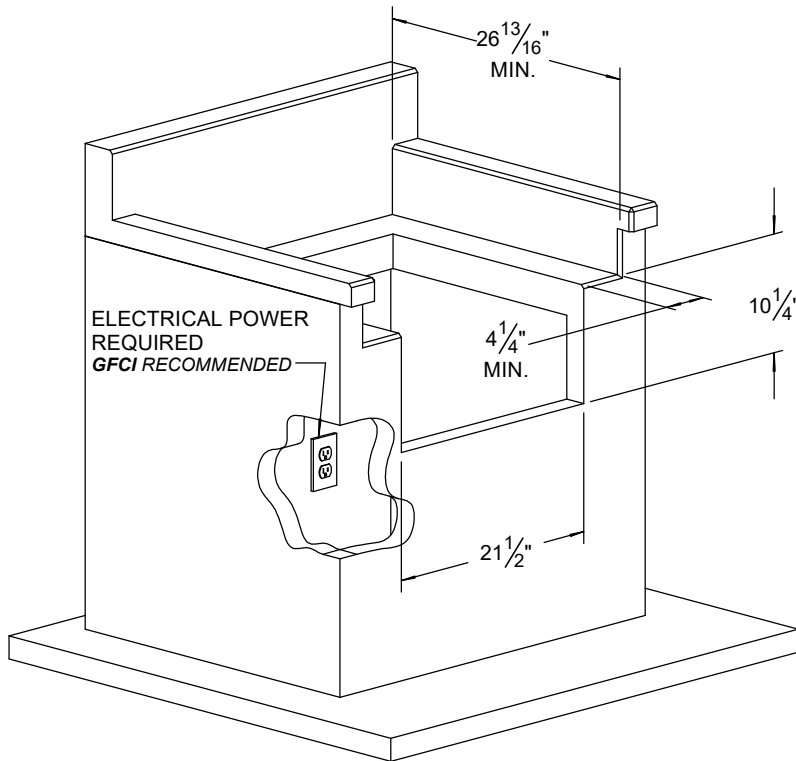


AIPGVP RECESSED DOWN INSTALLATION



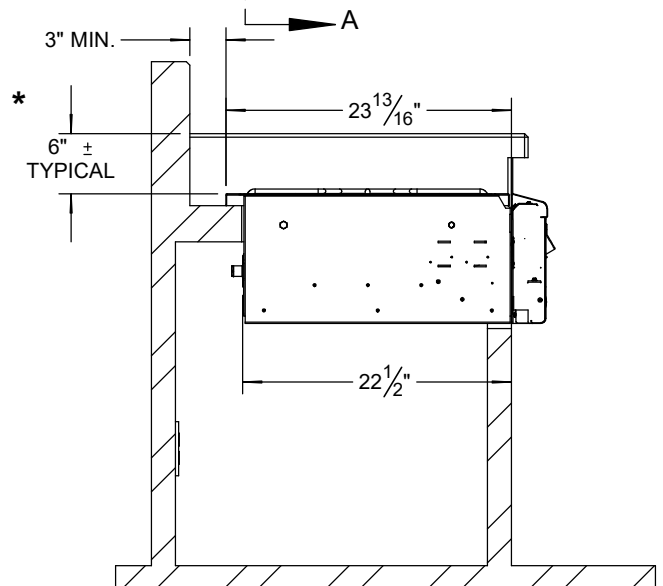
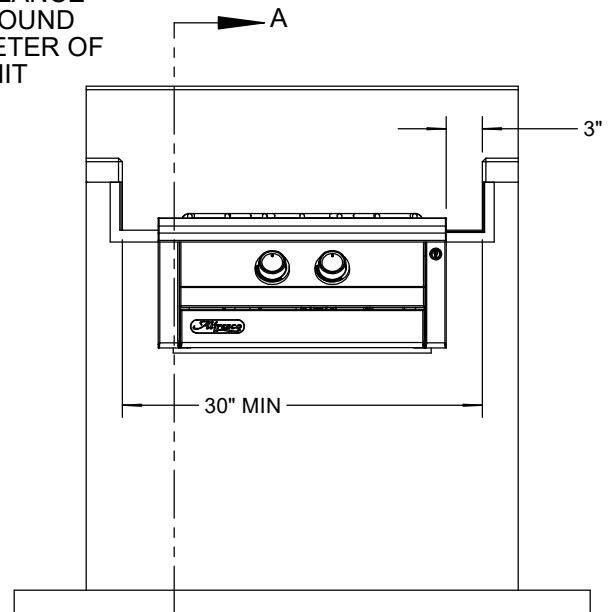
NOTE:
3" MINIMUM
CLEARANCE
ALL AROUND
PERIMETER OF
THE UNIT

COUNTERTOP CUTOUT REQUIREMENTS



**NOTE:

TYPICAL RECESSED DOWN IS 6"
MAY BE DIFFERENT TO SUIT CUSTOMER PREFERENCE.



SECTION A-A