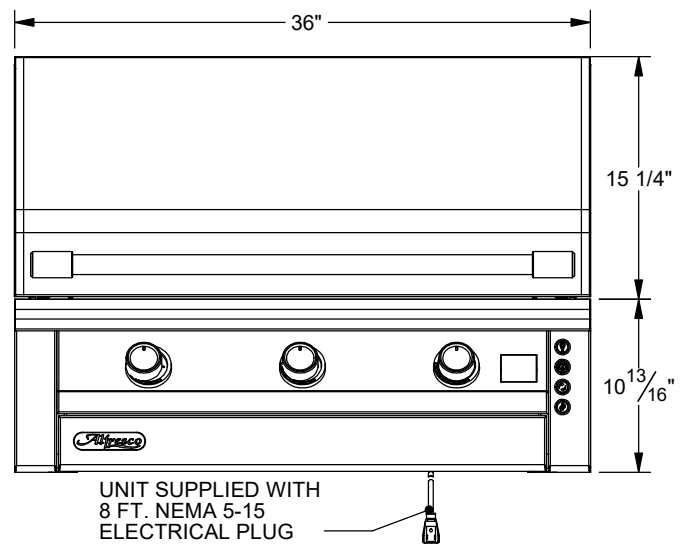
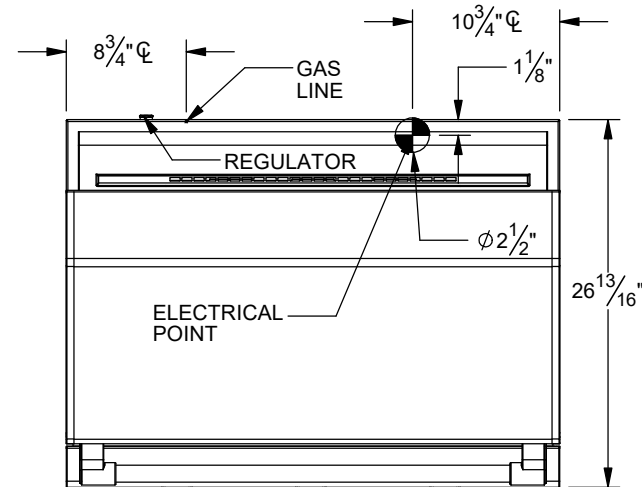
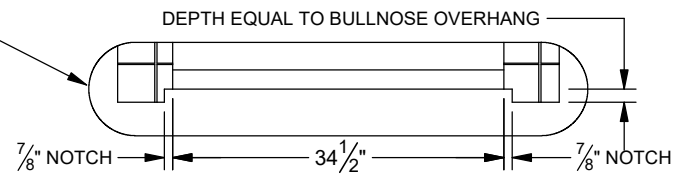
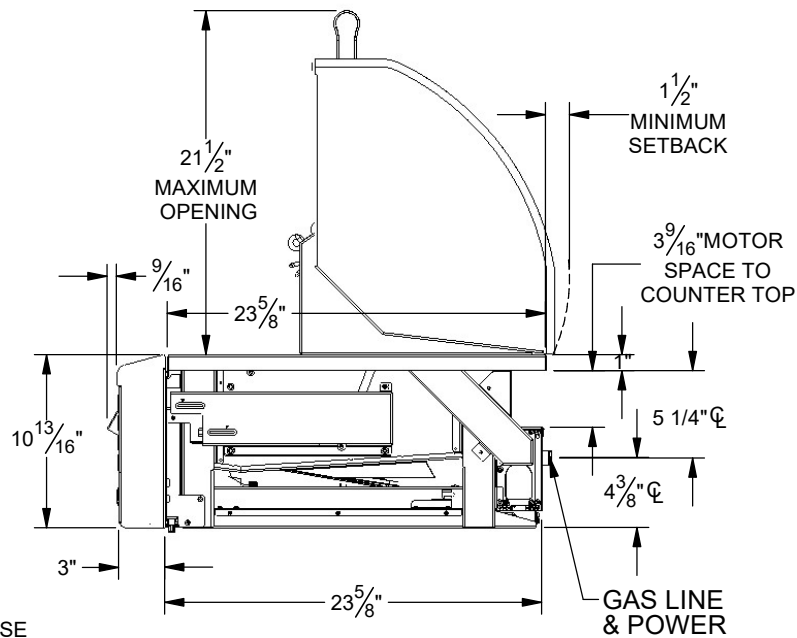
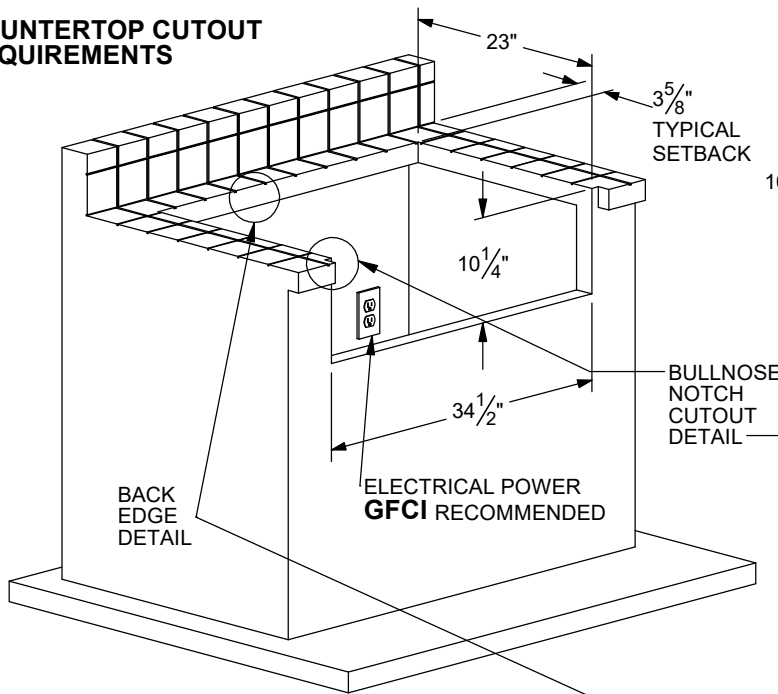


TYPICAL AIPG-36 INSTALLATION

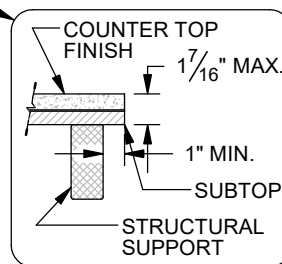


## COUNTERTOP CUTOUT REQUIREMENTS



## NOTE:

- CUTOUT SHOWN FOR NON - COMBUSTIBLE CONSTRUCTION ONLY. OTHERWISE USE OF AIJ-36-01 INSULATING JACKET IS REQUIRED.
- COUNTER MUST HAVE PROPER GAS AND POWER SUPPLIES FOR YOUR ALFRESCO BBQ.



## SPECIFICATIONS:

BTUH = 90,000  
 FUEL = NG @ 4" W.C. OR LP @ 10" W.C.  
 ELECTRICAL POWER = 115 VAC / 7 AMPS / 60 Hz.  
 GAS CONNECTION - 1/2" NPT (NG) OR 3/8" ODF (LP)